

WINTER/SPRING 2025

Wethersfield Parks and Recreation

(860)721-2890



Registration - Residents and Friends of the Nature Center begins Wednesday, January 8th at 8:00A and for non-residents on Thursday, January 9th at 8:00A.

Website - wethersfieldct.gov/recreation

Refund Policy - For refund details, see page 2.



SCAN QR CODE FOR
ONLINE REGISTRATION

STAFF

Kathleen Bagley, Director
Jahlim Cuttino, Therapeutic Recreation Supervisor
Dayshell Foreshaw, Technical Assistant
John Lamb, Custodian
Izzy Lopez, Technical Assistant
Rachael Mattioli, Assistant Director
Angela Mull, Technical Assistant
Amy Miller Dignoti, Senior Center Coordinator
Natalie Morrison, Recreation Supervisor II
Tom Nowak, Custodian
Sara Sorrentino, Recreation Supervisor II
Patrick Telman, Nature Center Director

UPDATED 4/29/2025

Registration Polices	page 2
Community Info/Events	page 3
Facilities	page 4
Staff Recognition	page 5
Aquatics	pages 6 - 7
Nature Center	pages 8 - 10
Therapeutic Recreation	page 11 - 12
Early Childhood	pages 13 - 14
Art, Dance & Chess.....	pages 14 - 16
Keane After School	pages 17 - 27
SDMS/Youth Services	pages 28 - 29
Social & Youth Services	page 28
Youth Sports	pages 30 - 31
Adult Sports	page 31
Fitness	pages 32 - 33
Senior Center	pages 34 - 38

ADVISORY BOARD

Michael Bisi, Chairman
Suzanne Barton, Vice Chairman
Ryan Alger
Sarah Gantley
Mary Mahar
Karen Mann
Stephanie Mokrycki
Thomas Mull
Rachel Shaltz
Shelley Carbone, Council Liaison

CONTACT INFORMATION

Parks & Recreation Department
505 Silas Deane Highway
860-721-2890

rec.activities@wethersfieldct.gov

William J. Pitkin Community Center
30 Greenfield Street
860-721-2750

community.center@wethersfieldct.gov

Eleanor Buck Wolf Nature Center
156 Prospect Street
860-721-2780

nature.center@wethersfieldct.gov

Senior Center
30 Greenfield Street
860-721-2770
senior.center@wethersfieldct.gov

Registration Policies

REGISTRATION: Registration for both winter and spring programs will begin for residents and Friends of the Nature Center on Wednesday, January 8th at 8:00A and non-residents on Thursday, January 9th at 8:00A. Exceptions are indicated in the program descriptions.

- Online registration enables you to know immediately that you are registered for the desired class.
- For registration by mail or in person, please use the registration form on the last page. Copies of the registration form are accepted. Please submit forms by mail or drop off at Parks & Recreation or the Pitkin Community Center. Forms received by mail or in person will be processed at random. Forms will be accepted one week prior to the start of registration.
- Registrations by fax or phone are not accepted.

REGISTERED HOUSEHOLD: Register online at rec.wethersfieldct.gov. Once your household is entered and approved in the database, you will receive a username and password by the next business day to begin registering online.

- Class participants must be registered under the household in which they reside.

PAYMENT: Online registration may be made by MasterCard, Visa, or Discover.

- Accepted methods of payment are cash, check or money order (payable to the Town of Wethersfield), MasterCard, Visa, or Discover.
- For financial assistance, please contact Parks & Recreation for further information.

WAIVER: If you have a physical limitation, it is your responsibility to obtain a statement from your doctor approving your participation in a program. Parks & Recreation complies with the Americans with Disabilities Act by making reasonable accommodations in its programs to enable participation by people with disabilities who meet essential eligibility requirements for the specific programs and facilities.

REFUNDS & CANCELLATIONS: Parks & Recreation reserves the right to cancel programs and issue refunds due to insufficient registrants or causes beyond its control. Refunds will be automatic if a session is cancelled.

- All refund requests for withdrawal from a program must be made in writing and sent to:
rec.activities@wethersfieldct.gov.
 - A full refund less a \$10 processing fee per program will be given if withdrawal is requested two (2) weeks prior to the start of the program.
 - A 50% refund less a \$10 processing fee per program will be given if withdrawal is requested one week prior to the start of the program.
 - REFUNDS WILL NOT BE GRANTED LESS THAN ONE WEEK PRIOR TO THE PROGRAM START DATE.

PROGRAM CANCELLATIONS: In person programs cancelled due to inclement weather will be announced on the Parks & Recreation info line at (860)721-2890 and on the Parks & Recreation Facebook page @ParksRecWethersfield.

- If schools close due to inclement weather, all programs beginning from 5:15A to 4:30P will be cancelled. If schools open late due to inclement weather, in person programs beginning before 10:00A are cancelled.
- If schools close early, all afternoon programs are cancelled. Evening cancellations will be announced by 4:00P.
- Weekend cancellations will be announced by 8:00A on the info line at (860) 721-2890, on WNBC-30 and on the Parks & Recreation Facebook page @ParksRecWethersfield.



Registration Form on last page.

PARKS AND REC REGISTRATION FAQ'S

01 CREATE AN ONLINE ACCOUNT

01



Creating an account through our website allows you to register online, know when a new brochure is available, and when registration will begin. It is best to create your account prior to registration opening to prevent any delays in the registration process.
rec.wethersfieldct.gov

02

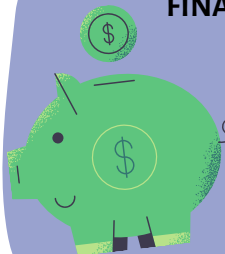
REGISTER IN-PERSON

Registering in person is a great way to get registrations in early. When submitting a paper registration form staff will keep the form and process the form on first day of registration. Paper registrations can be printed from our website or picked up in the office. You can mail, email, or hand deliver your forms.



03 FINANCIAL ASSISTANCE

03



We understand times are tough and we are here to work with families to make sure everyone can enjoy the programs we offer. Please reach out to Social and Youth Services or stop in for more information.
(860) 721-2880

04

POOL PASS BARCODE

Pool passes are located virtually via your Parks and Rec online account under 'My Memberships'. Take a screenshot of the barcode and keep it in your phone for easy access during the summer and winter seasons.



05

WETHERSFIELD YOUTH SPORTS LEAGUES

Parks and Rec offers a variety of activities; however, we do not process registrations for the following leagues: Wethersfield Eagles Football and Cheer, George D. Ritchie Soccer Club, Wethersfield Little League, Wethersfield Basketball Association, Wethersfield Field Hockey, and Wethersfield Lacrosse. See page 31 for registration information.



COMMUNITY INFORMATION

VACATION CAMPS

Nature Camp. See page 8.
Dance Camp. See page 16.
Super Athletes Camp. See page 24.



VETERAN COFFEE HOUSE

Beginning in January, on the 4th Tuesday of every month at 9:30A veterans are welcomed to visit the Senior Center for pastries/donuts, coffee and conversation.



For a list of things to see and do in Wethersfield, where to stay, eat, and shop, along with an events calendar, please visit Historic Wethersfield at wethersfieldct.gov/visitor-information

TOWN EMERGENCY SHELTER

Location: William J. Pitkin Community Center, 30 Greenfield Street. During town-wide emergencies an announcement will be made if opened. Shelter can be reached at 860-721-2750.



theGreatElm
LIVE. WORK. PLAY. DISCOVER WETHERSFIELD.

The Great Elm is a community website that allows residents to get involved in groups, clubs, organizations, and more in town.

Live. Work. Play. Discover Wethersfield.

WILLIAM J. PITKIN COMMUNITY CENTER

30 Greenfield Street. Houses the Senior Center, Wethersfield Community Television, 9/11 Memorial Sports Center, The Learning Circle Preschool and other programs. Rooms may be rented for wedding receptions, anniversaries, birthdays, meetings, etc. The facility is a designated shelter during town-wide emergencies.



9/11 MEMORIAL SPORTS CENTER

30 Greenfield Street. Located in the Pitkin Community Center. Facility includes gym, fitness room, and meeting room with wireless internet access. Developed in partnership with the Keane Foundation, this area also displays steel recovered from the ruins of the World Trade Center. The gym is available for rental through the Pitkin Community Center.

SOLOMON WELLES HOUSE

220 Hartford Avenue. An historic house built in 1774 overlooking the Wethersfield Cove. Residents and local businesses may rent this facility for meetings and small parties up to 52 people.



ELEANOR BUCK WOLF NATURE CENTER

156 Prospect Street. An environmental education center in Mill Woods Park operated with member support. Exhibits, live animals, educational programs, field trips, parties, room rentals, scout programs, and volunteer opportunities. For visiting hours and program offerings please see page 8.



WETHERSFIELD COVE & BOAT LAUNCH

Main Street. Marina includes docks and boat launch with access to the CT River. Tender cleats and mooring rentals are available, weather and conditions permitting, Memorial Day through Columbus Day. Rentals are available online or at the Parks & Recreation office starting January 8th. A copy of current boat registration and declaration page of insurance policy must be submitted along with completed application and payment.

STANDISH PARK

Garden Street & Hartford Avenue. Features Mikey's Place (two universally accessible playscapes for toddlers & children), basketball court, baseball field, tennis and pickleball courts.



MILL WOODS PARK

Prospect Street at Wolcott Hill Road. Features Loretta's Dream Pavilion, skate park, playground, bocce, tennis and basketball courts, sports fields, picnic area, walking paths, swimming pond and a dog park.



WINTERGREEN WOODS

Folly Brook Boulevard & Eagle Drive. Features walking trails through 110 acres of forest and wetlands. The Heritage Way Bikeway/Pedestrian Path connects to other parks.

HERITAGE WAY BIKE TRAIL

A 10 mile bike path on existing streets and off-road paths connecting many parks, schools and open spaces. Beginning at the Old Reservoir and meanders through town including Mill Woods Park, Wintergreen Woods, Cove Park and Old Wethersfield.



GARDEN PLOTS

Wethersfield Fire Department Station #1: 20' x 30' plots available to residents ages 18+. Individuals who purchased a plot in 2024 will be given the opportunity to purchase the same plot for 2025. Registration forms will be mailed to those households January 2025. Fee per plot: \$30.00. One plot per family, with additional plot assignments made after all interested residents have been satisfied. Register online or in person at Parks & Recreation beginning Thursday, February 20th.

PLAYGROUNDS

Cedar Street/Farms Village
Charles Wright
Emerson-Williams School
Greenfield Park
Hanmer School
Highcrest School
Mikey's Place
Mill Woods Park
Webb School

TENNIS COURTS

Mill Woods Park
Standish Park (also lined for pickleball)
Webb Elementary School
Wethersfield High School

SPECIAL STAFF RECOGNITION AND THANK YOU

After 35 years of dedicated service to Wethersfield Parks and Recreation, Department Director Kathy Bagley will be retiring January 2025.

Since its inception in 1960, the Wethersfield Parks and Recreation Department has only had two directors: William J. Pitkin and Kathleen A. Bagley.

For the past 35 years Kathy has been responsible for overseeing town parks, pools and fields, facilities including the William J. Pitkin Community Center, Eleanor Buck Wolf Nature Center, Solomon Welles House, along with various recreational, educational and therapeutic programs.

During her tenure, Kathy has overseen major renovation projects including the conversion of the Moeller Home to the Eleanor Buck Wolf Nature Center, Mill Woods Swimming Pond, J.C. Willard Pool, William J. Pitkin Community Center and Little League Costello Field.

Kathy has been instrumental in developing the master plans for both Mill Woods and Cove Parks. She also obtained grants to improve and expand facility offerings at the Cove Park Boat Launch and along the Heritage Way Bike Trail.

Kathy established partnerships with various organizations in town to develop and enhance park facilities and programs. Some of these successful partnership examples include Mikey's Place Playground, Keeney Skate Park, Wethersfield Dog Park, Loretta's Dream Pavilion and Keane on Kids.

Kathy can always be seen working at the numerous special events that the Town hosts including Cornfest, Holidays on Main, Memorial Day Parade, Dog Swim, Fireworks as well as coming out to support Arbor Day and the Keane and Mikey's Place Races.

One of Kathy's greatest passions as Director is working with the Wethersfield Teen Theater Company. This program provides an opportunity for youth to learn about the theater by taking responsibility for the business and creative aspects of running the theater company and producing summer musicals including Grease, Mamma Mia, Legally Blonde and Pippin just to name a few.

In 2014, Kathy became director of both the Parks and Recreation and Social, Youth and Senior Services departments. Additional responsibilities included overseeing programs and services for the elderly and persons with disabilities, food and fuel bank, special needs and camp funds, positive youth development, and crisis intervention.

In the words of Vince Lombardi, former Packers coach, "The price of success is hard work, dedication to the job at hand, and the determination that whether we win or lose, we have applied the best of our ourselves to the task at hand." Anyone who has worked with Kathy over her 35 years of service can attest to the fact that she embodies and epitomizes this quote.

On behalf of the entire Wethersfield Community please join us in extending a heartfelt thanks to Kathy and congratulating her on a well-earned retirement!

Congratulations!

Backman Pool at Wethersfield High School

- Open 10/15/24 - 5/31/25
- 411 Wolcott Hill Road
- Proof of age and residency (e.g. driver's license) is required for admission.
- Non-resident guests must be accompanied by a resident adult.

Daily Admission:

*Child = Under 18

- Resident Adult \$4
- Resident Child* \$2
- Non-resident Adult \$5
- Non-resident Child* \$3

Rec Swim (all ages):

- Tuesday, Thursday, and Friday 7:45 - 9:00P
- Saturday 1:00 - 3:30P

Adult Swim (18+):

- Tuesday and Thursday 6:30 - 7:15A

Season Passes

Provides residents unlimited admission and may be used at Newington and Rocky Hill pools. Purchase online, by mail-in registration, or in person at Parks & Recreation. Passes will not be sold at the pool. Daily admission cannot be credited toward purchase of a pass.

Family Pass \$65

Available to two (2) adults as well as children living in the same household. Additional adult(s) living in the household must purchase an individual or family pool pass. Please remember to list all family members on the pass.

Individual Pass \$40

Available to any resident or child.



Your season pass is a barcode found in your online account under "My Account" - "My Memberships".



SWIM LESSONS

Registration deadline for winter is Friday, 1/17 at 4:00P. Registration deadline for spring is Friday, 3/21 at 4:00P. Classes will not be held on 4/19. Swim lessons are available to residents only. See prerequisites for each swim lesson level. A swim pass is required for swim lessons. Instructors may reassign level placement based on skills and availability.

PARENT AND CHILD AQUATICS

Age 1½-3. Children will have fun in the water while being exposed to basic swimming skills through games, songs and activities. Learning objectives: Exit and enter the water in a safe manner, in water exploration, bob, leg and arm action on front and back individually and combined, roll from front to back and back to front, front and back float, and glide with assistance. Min/Max: 1/10. No class 4/19. Wethersfield High School.

Date	Day	Time	Fee	Code
1/18-3/8	Sa	9:00-9:40A	\$20	401020-01
3/22-5/17	Sa	9:00-9:40A	\$20	501020-01

PRESCHOOL AQUATICS

Age 4-5. Prerequisite: Ages 4-5 or age 3 and completed Parent & Child Aquatics. Students become familiar with the aquatic environment. Learning objectives: Enter and exit water using ladder, steps or side, bob, open eyes underwater and retrieve submerged objects, front and back glide, front and back float, recover from a front and back float or glide to a vertical position, roll from front to back and back to front, tread water using arm and leg actions, combined arm and leg actions on front and back and finning arm action on back. Min/Max: 1/6. No class 4/19. Wethersfield High School.

Date	Day	Time	Fee	Code
1/18-3/8	Sa	10:30-11:10A	\$20	401021-01
1/18-3/8	Sa	12:00-12:40P	\$20	401021-02
3/22-5/17	Sa	10:30-11:10A	\$20	501021-01
3/22-5/17	Sa	12:00-12:40P	\$20	501021-02

LEVEL 1: INTRODUCTION TO WATER SKILLS

Age 5-13. Prerequisite: Ages 5+ or age 4 and completed Preschool Aquatics. Students learn how to feel comfortable in the water and safely enjoy it. Learning objectives: Enter and exit water independently, blow bubbles through mouth and nose, bob, open eyes under water and retrieve submerged objects, front and back glides and floats, recover from float or glide to vertical position, roll from front to back and back to front, tread water using arm and hand actions, alternating and simultaneous arm and leg actions on the front and back, combined arm and leg actions on front and back and follow basic water safety rules. Min/Max: 1/10. No class 4/19. Wethersfield High School.

Date	Day	Time	Fee	Code
1/18-3/8	Sa	9:45-10:25A	\$20	401022-01
1/18-3/8	Sa	10:30-11:10A	\$20	401022-02
1/18-3/8	Sa	12:00-12:40P	\$20	401022-03
3/22-5/17	Sa	9:45-10:25A	\$20	501022-01
3/22-5/17	Sa	10:30-11:10A	\$20	501022-02
3/22-5/17	Sa	12:00-12:40P	\$20	501022-03

LEVEL 2: FUNDAMENTALS OF AQUATIC SKILLS

Age 5-13. Prerequisite: Successful completion of Level 1. Students learn basic swimming skills. Learning objectives: Enter and exit water by stepping or jumping from the side, fully submerge and hold breath, bob, open eyes under water and retrieve submerged objects, front, jellyfish and tuck floats, front and back glides and floats, recover to vertical position, roll from front to back and back to front, change direction of travel while swimming on front or back, tread water using arm and leg actions, combined arm and leg actions on front and back and finning arm action. Min/Max: 1/10. No class 4/19. Wethersfield High School.

Date	Day	Time	Fee	Code
1/18-3/8	Sa	9:45-10:25A	\$20	401023-01
1/18-3/8	Sa	11:15-11:55A	\$20	401023-02
3/22-5/17	Sa	9:45-10:25A	\$20	501023-01
3/22-5/17	Sa	11:15-11:55A	\$20	501023-02

LEVEL 3: STROKE DEVELOPMENT

Age 5-13. Prerequisite: Successful completion of Level 2. Additional guided practice helps students improve skills. Learning objectives: Enter water by jumping from side, headfirst entries from the side in sitting and kneeling positions, bobbing while moving toward safety, rotary breathing, survival float, change from vertical to horizontal position on front and back, tread water, flutter, scissor, dolphin and breaststroke kicks on front and front crawl and elementary backstroke. Min/Max: 1/10. No class 4/19. Wethersfield High School.

Date	Day	Time	Fee	Code
1/18-3/8	Sa	11:15-11:55A	\$20	401024-01
1/18-3/8	Sa	12:00-12:40P	\$20	401024-02
3/22-5/17	Sa	11:15-11:55A	\$20	501024-01
3/22-5/17	Sa	12:00-12:40P	\$20	501024-02

LEVEL 4: STROKE IMPROVEMENT

Age 6-13. Prerequisite: Successful completion of Level 3. Students gain confidence during swim lessons, improve strokes and gain additional aquatic skills. Learning objectives: Headfirst entries from the side in compact and stride positions, swim under water, feet first surface dive, survival swimming, front crawl and backstroke open turns, tread water using 2 different kicks, front and back crawl, elementary backstroke, breaststroke, sidestroke and butterfly and flutter and dolphin kicks on back. Min/Max: 1/10. No class 4/19. Wethersfield High School.

Date	Day	Time	Fee	Code
1/18-3/8	Sa	9:45-10:25A	\$20	401025-01
3/22-5/17	Sa	9:45-10:25A	\$20	501025-01

LEVEL 5: STROKE REFINEMENT

Age 6-13. Prerequisite: Successful completion of Level 4. Students learn to refine strokes and become more efficient swimmers. Learning objectives: Shallow-angle dive from the side then glide and begin a front stroke, tuck and pike surface dives (submerge completely), front and back flip turns while swimming, front and back crawl, elementary backstroke, breaststroke, sidestroke, butterfly and sculling. Min/Max: 1/10. No class 4/19. Wethersfield High School.

Date	Day	Time	Fee	Code
1/18-3/8	Sa	11:15-11:55A	\$20	401026-01
3/22-5/17	Sa	11:15-11:55A	\$20	501026-01

LEVEL 6: FUNDAMENTALS OF DIVING

Age 6-13. Prerequisite: Successful completion of Level 5. Students learn to swim with ease and efficiency and gain the ability to swim smoothly over greater distances. Learning objectives: Increase endurance while swimming front (100 yards) and back (50 yards) crawls, butterfly (50 yards), elementary backstroke (100 yards), breaststroke (50 yards) and sidestroke (50 yards), demonstrate front and back flip turns and open turns for freestyle, backstroke, breaststroke, sidestroke and butterfly, dive from deck and diving board in kneeling, forward dive fall-in and standing positions, forward dive from tuck and pike positions with takeoff and swim 500 yards continuously using any 3 strokes of choice. Min/Max: 1/10. No class 4/19. Wethersfield High School.

Date	Day	Time	Fee	Code
1/18-3/8	Sa	9:00-9:40A	\$20	401027-01
3/22-5/17	Sa	9:00-9:40A	\$20	501027-01

BARRACUDAS SWIM STROKE CLINIC

Swim strokes and competitive technique refinement. Prerequisite: Able to swim 2 laps without stopping. Min/Max: 18/24. Wethersfield High School.

Date	Day	Time	Res/NonRes	Code
Age 5-10				
3/3-3/28	M-F	5:45-6:30P	\$115/\$130	401003-01
4/21-5/15	M-F	5:45-6:30P	\$115/\$130	501003-01
Age 11-18				
3/3-3/28	M-F	6:30-7:45P	\$115/\$130	401004-01
4/21-5/16	M-F	6:30-7:45P	\$115/\$130	501004-01

**LIFEGUARD TRAINING**

Age 15+. American Red Cross Lifeguard Certification program. To become certified, participants must complete 7.5 hours of online learning, attend all in-person dates, and successfully pass tests. Class will be held Thursday/Friday: 5:00 - 9:00P and Saturday/Sunday: 1:00 - 7:00P. Min/Max: 4/10. Wethersfield High School.

Date	Day	Time	Res/NonRes	Code
2/27-3/2	Th-Su	See above	\$350/\$400	401052-01

INTERESTED IN BECOMING A LIFEGUARD?

The Wethersfield Parks and Recreation Department is accepting applications for lifeguarding and water safety instructor (WSI) positions at Mill Woods Pond and Willard Pool. APPLICANTS ARE ENCOURAGED TO APPLY BY FRIDAY, MARCH 7th. Applicants must be 15 years old and have a valid lifeguarding certification OR be enrolled in a lifeguard certification course to apply. Applications are available online at wethersfieldct.gov/recreation. Completed seasonal/part-time employment applications should be submitted to Wethersfield Parks and Recreation Department, 505 Silas Deane Highway, Wethersfield, CT 06109. Contact Wethersfield Parks and Recreation at (860)721-2890 for more information.

VISITING INFORMATION

156 Prospect Street.
Open Tuesday – Saturday,
10:00A-5:00P.

Features hands-on exhibits,
live animals, picnic areas
and walking trails in Mill
Woods Park. Suggested
donation \$3.

FREE for Friends members.
Information regarding
rentals, parties, volunteer
opportunities, lectures, field
trips and outreach
programs are available
online at
www.ebwnaturecenter.org,
on Facebook by liking
"ebwnaturecenter" or via
phone at 860-721-2780.

Friends of the Eleanor Buck Wolf Nature Center

The Friends of the Nature
Center is an independent,
member- supported, non-
profit organization which
promotes ecology education
through programs, events,
and scholarships. Friends of
the Nature Center meets on
the third Tuesday of each
month 7:00-8:00P. Members
visit the Nature Center for
free, receive program
discounts, early registration,
etc. You can join or renew
online while registering for
programs. See page 39 for
more information.



VACATION ADVENTURES AT EBWNC

Grade K-6. Experience hands-on lessons about the environment. Create unique art projects. Visit with live animals and enjoy outdoor explorations in Mill Woods Park. Combine fun and learning during school vacation with adult educators and teen assistants. Financial assistance is available.

ADVENTURES IN WINTER 2/14 & 2/17-2/18

I WANNA GO FAST!

Celebrate Speedweek 2025 at the Nature Center with the fastest animals on earth. From the cheetah, who can go from 0 to 60 miles per hour in 3 seconds to the a peregrine falcon, who can reach speeds close to 200 miles per hour. Study how these animals use speed to help them survive in the wild. Min/Max: 5/16. EBW Nature Center.

Date	Day	Time	Friends/Other	Code
Grades K-2				
2/14	F	8:00A-4:30P	\$47/\$52	406020-02
2/17	M	8:00A-4:30P	\$47/\$52	406021-02
2/18	Tu	8:00A-4:30P	\$47/\$52	406022-02
Grades 3-6				
2/14	F	8:00A-4:30P	\$47/\$52	406020-03
2/17	M	8:00A-4:30P	\$47/\$52	406021-03
2/18	Tu	8:00A-4:30P	\$47/\$52	406022-03

ADVENTURES IN SPRING 4/14-4/17

NATURE AND STEM

Discover how nature fits into the world of science, technology, engineering and mathematics. Learn the many ways STEM and Nature work together to make our world a cleaner, safer, more efficient and brighter place. Min/Max: 5/16. EBW Nature Center.

Date	Day	Time	Friends/Other	Code
Grades K-2				
4/14	M	8:00A-4:30P	\$47/\$52	506040-02
4/15	Tu	8:00A-4:30P	\$47/\$52	506041-02
4/16	W	8:00A-4:30P	\$47/\$52	506042-02
4/17	Th	8:00A-4:30P	\$47/\$52	506043-02
Grades 3-6				
4/14	M	8:00A-4:30P	\$47/\$52	506040-03
4/15	Tu	8:00A-4:30P	\$47/\$52	506041-03
4/16	W	8:00A-4:30P	\$47/\$52	506042-03
4/17	Th	8:00A-4:30P	\$47/\$52	506043-03

AFTER SCHOOL PROGRAMS AT THE EBW NATURE CENTER



ANIMAL CARETAKERS

Age 6-12. Ever wondered exactly how hard it is to care for our nature center friends? Each week we will focus on one animal friend and learn what is needed to care for that animal. Cleaning, nutritional needs, enrichment, fun facts and more. Min/Max: 4/8. EBW Nature Center.

Date	Day	Time	Friends/Other	Code
Age 6-9				
1/14-2/11	Tu	3:45-5:00P	\$30/\$40	406425-01
3/11-4/8	Tu	3:45-5:00P	\$30/\$40	506425-01
Age 10-12				
1/15-2/12	W	3:45-5:00P	\$30/\$40	406425-02
3/12-4/9	W	3:45-5:00P	\$30/\$40	506425-02

NATURE ARTS AND CRAFTS

Age 6-12. Make crafts inspired by the beauty of the natural world using many of nature's own art supplies. Min/Max: 4/8. EBW Nature Center.

Date	Day	Time	Friends/Other	Code
4/22-5/20	Tu	3:45-5:00P	\$30/\$40	506426-01



VISITING INFORMATION

156 Prospect Street.
Open Tuesday – Saturday,
10:00A-5:00P.

Features hands-on exhibits,
live animals, picnic areas
and walking trails in Mill
Woods Park. Suggested
donation \$3.

FREE for Friends members.
Information regarding
rentals, parties, volunteer
opportunities, lectures, field
trips and outreach
programs are available
online at
www.ebwnaturecenter.org,
on Facebook by liking
“ebwnaturecenter” or via
phone at 860-721-2780.

OUTREACH PROGRAMS

Nature Center staff is
available to travel to your
school or organization and
provide students and adults
with the opportunity to visit
with the animals that live at
the Nature Center. A variety
of nature based programs
are also available.

**BOOK YOUR SCOUT GROUP**

Boy Scout and Girl Scout
troops may schedule
seasonal and age
appropriate programs
(insects, flowers, forestry,
etc.) after school or on
weekends. Programs are
subject to availability and
run 1-1½ hours in length. For
more information contact
the Nature Center.

**ADULT PROGRAMS****WILDERNESS FIRST AID**

Age 14+. Basic training for outdoor enthusiasts
and group leaders. Instruction and hands-on
practice in patient assessment, cold and heat-
related injuries, fractures, environmental
emergencies (e.g. lightning), etc. Meets ACA staff
guidelines. Recertifies SOLO WFR. Includes 2-year
certification, lunch, snacks and text. After 2/12,
\$125 becomes non-refundable. Min/Max: 4/20.
EBW Nature Center.

Date Day Time Friends/Other Code
3/1-3/2 Sa, Su 9:00A-5:00P \$210/\$225 406180-01

**FREE PROGRAMS****WINTER WALKS**

All ages. Join the Great Meadows Conservation Trust for their 2025 Brisk Winter Walks.
Co-sponsored with the Land Heritage Coalition of Glastonbury,
the Eleanor Buck Wolf Nature Center and Goodwin College. Locations vary.

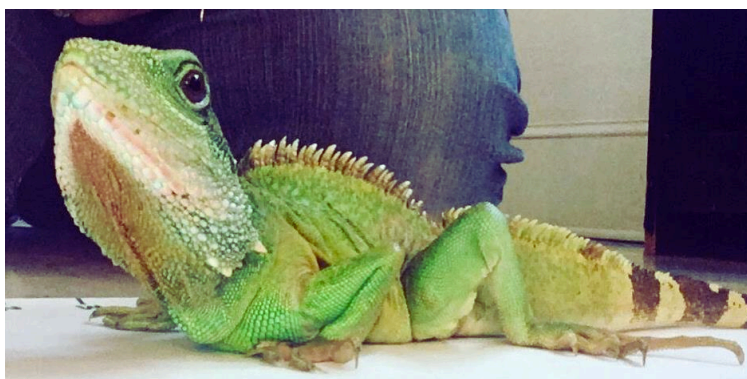
Day	Date	Time	Location
Wednesday	1/1	1:00P	Wood Parcel and More
Sunday	1/5	1:00P	Goff Brook Trail in the DiPaola
Saturday	1/11	11:00A	Walker Easement & Coal Wharf
Monday	1/13	4:00P	Main Street to Wethersfield Cove Park (approx. 1 mile)
Sunday	1/18	1:00P	Wolcott, Crilly and Zeleski Parcels in the Wethersfield Meadows
Sunday	1/19	1:00P	Wolf Parcel and DeMille Easement on the Cove and Folly Brook
Saturday	1/25	9:00A	Crow Point Property
Sunday	1/26	1:00P	Dickau, Beers, Baril & Bidwell Parcels in Point Meadows
Saturday	2/13	9:00A	Wilson-Carvalho & Hockanum Meadows Parcels

Dress for the weather and ground conditions, including mud and snow. Weather and water conditions may cause scheduled walks to be cancelled. These locations are used for hunting so wear an orange vest if you have one. Call Jim Woodworth for the most up to date information at 860-808-9968.

**NATURE CENTER
EXTENDED HOURS**

The Nature Center will stay open late during the Winter and Spring season on the dates below. Take advantage of the extended hours to visit the animals and view our displays.

Day	Date	Time	Free
Th	2/20	5:00-8:00P	Free
Th	3/13	5:00-8:00P	Free
Th	4/24	5:00-8:00P	Free
Th	5/29	5:00-8:00P	Free

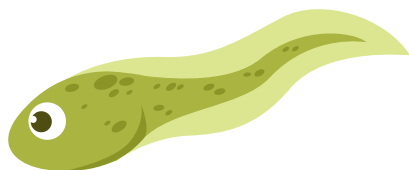


EARLY CHILDHOOD PROGRAMS

NATURE SCHOOL - TADPOLES

Age 2-3½. Parent/caregiver and child participate in educational and hands-on activities utilizing curriculum focused on the animals that reside at the EBW Nature Center. Children will compare and contrast their anatomies, habitats and diet to that of the reptiles, mammals, birds, fish and amphibians at the Nature Center. Activities include literacy, music and art connections as well as outdoor exploration. Circle time and games will help develop social skills and engage curiosity about the natural world. No class 2/18, 3/4, 3/5. Min/Max: 4/10. EBW Nature Center.

Date	Day	Time	Friends/Other	Code
2/11-4/8	Tu	10:00-11:30A	\$70/\$80	406081-01
2/12-4/2	W	10:00-11:30A	\$70/\$80	406081-02
4/22-6/3	Tu	10:00-11:30A	\$70/\$80	506081-01
4/23-6/4	W	10:00-11:30A	\$70/\$80	506081-02



SUPERB OWL SUNDAY

Celebrate superb owls and other birds at the Nature Center. Listen to owl calls, read owl books, make an owl craft, and meet one of the nature center birds. Parent/caregiver stays with child. Children ages 6-12 will dissect a real owl pellet and learn what owls eat. Please pack a small snack for story time. Min/Max: 4/10. EBW Nature Center.

Date	Day	Time	Friends/Other	Code
Age 2-5				
2/9	Su	12:00-1:30P	\$15/\$18	406223-01
Age 6-12				
2/9	Su	2:00-3:30P	\$15/\$18	406223-02



NATURE SCHOOL FROGLETS

Age 3-5. Parent/caregiver and child participate in hands-on activities using nationally recognized curriculum Growing Up Wild. Activities connect young children to nature and expose them to new math and literacy vocabulary. Through music, movement and art, this program will spark creativity and build on a child's natural affinity towards nature. Each activity will have a take home connection which will enable the participant to continue exploring at home. Min/Max: 4/10. EBW Nature Center. No class 2/14, 3/6, 3/7.

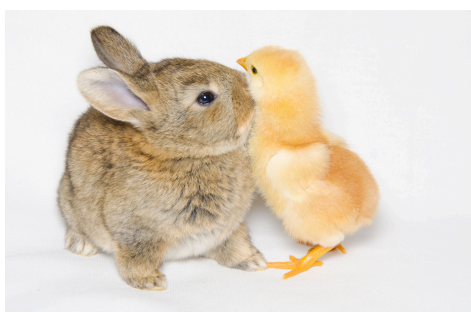
Date	Day	Time	Friends/Other	Code
2/13-4/3	Th	10:00-11:30A	\$70/\$80	406082-01
2/7-4/4	F	10:00-11:30A	\$70/\$80	406082-02
4/24-6/5	Th	10:00-11:30A	\$70/\$80	506082-01
4/25-6/6	F	10:00-11:30A	\$70/\$80	506082-02



BIRDS AND BUNNIES

Age 2-5. As the days are getting longer and warmer, we start to see more animal activity outside in spring. Meet some Nature Center friends and learn about springtime animal habits through song, stories, crafts and games. Bring a small snack and dress appropriately for outdoor exploration. Min/Max: 4/10. EBW Nature Center.

Date	Day	Time	Friends/Other	Code
4/9	W	10:00-11:30A	\$15/\$18	506223-01



VOLUNTEER

Volunteers are an essential part of the Nature Center's daily operations. Summer camps, special event programs and daily animal care would not be possible without the dedication and commitment of volunteers.

NATURE CENTER
VOLUNTEER ORIENTATION

Age 13+. Students, adults and interns may volunteer as a greeter, gardener, animal caretaker, educator, special events assistant, etc. Orientation introduces the seasonal programs and events, on-going and short-term volunteer opportunities and basic safety training. Volunteer orientations are scheduled by appointment. Contact the Nature Center at 860-721-2780.

HOST YOUR NEXT
BIRTHDAY PARTY AT THE
NATURE CENTER

A birthday party at the Eleanor Buck Wolf Nature Center is unique, encouraging interest in nature while enjoying the conveniences of a party outside your home. Staff will assist with set-up/clean-up, greet guests and lead hands-on activities with the animals. Parties are 2 hours and flexible scheduling is offered. Fee is \$175 for Friends of the Nature Center and \$200 for non-members. For more information, contact the Nature Center.

SCHOOL FIELD TRIPS

The Nature Center is a great place for field trips. Staff provide hands-on learning experiences and can design programs that align with the current state science standards.



NEW TR PROGRAMS!

SATURDAY NIGHT SOCIAL

Age 10+. Join old and new friends alike for a fun-filled inclusive time. Come and let loose with some good music and dancing. This will also include pizza, juice, and ice cream. We will also engage in group discussions, trivia, and table games. This is a great way to connect with friends and make new ones. Min/Max: 8/12. Pitkin Community Center.

Date	Day	Time	Fee	Code
1/25	Sa	6:00-9:00P	\$15	409287-01
2/22	Sa	6:00-9:00P	\$15	409287-02
3/15	Sa	6:00-9:00P	\$15	409287-03
4/12	Sa	6:00-9:00P	\$15	409287-04



A TASTE OF WETHERSFIELD

Age 15+. Join us as we explore the different restaurants within Wethersfield. This is a great way to socialize with friends and make new ones. We will be exploring the following: Hungry Pot on 1/27, River on 2/10, Village Pizza on 2/24, Sake Cafe on 3/10, and Buffalo Wild Wings on 3/28. Min/Max: 6/12. Pitkin Community Center.

Date	Day	Time	Fee	Code
1/27	M	12:00-2:30P	\$10	409500-01
2/10	M	12:00-2:30P	\$10	409500-02
2/24	M	12:00-2:30P	\$10	409500-03
3/10	M	12:00-2:30P	\$10	409500-04
3/28	F	12:00-2:30P	\$10	409500-05



LAWN GAMES

Age 14+. Open to individuals with special needs and their peers. Join us for some fun in the sun with lawn games; Bocce, Cornhole, giant games such as Connect 4, Jenga and more. The goal of this program is to have a good time by enjoying fun games, music, and most importantly socializing. Participants are encouraged to share ideas of potential lawn games that can be tried or added to our arsenal. This program will only take place outdoors. Please come in appropriate attire and bring a water bottle. Min/Max: 5/12. Pitkin Community Center. No class 4/14.

Date	Day	Time	Res/NonRes	Code
3/24-5/19	M	4:30-5:30P	\$20/\$25	509250-01



TOTAL ATHLETE

Age 14+. Young adults will train their bodies, prepare their minds and get their spirits soaring. Program includes cardio workouts, fitness room use as well as stretching, yoga and "bootcamp" fun. Min/Max: 6/10. Pitkin Community Center. No class 4/15.

Date	Day	Time	Fee	Code
3/25-5/20	Tu	5:30-6:30P	\$37	509150-01



MIND OVER MILES

Age 13+. Calling all walkers. Open to individuals with special needs and their peers. This program is designed for all levels of walkers, whether that be fast or slow pace on either rough or smooth terrain. Join some old friends and potential new ones for a nice healthy walk while enjoying some fresh air and beautiful scenery. Please come in appropriate attire and bring a water bottle. Min/Max: 6/15. Pitkin Community Center.

Date	Day	Time	Fee	Code
3/24-5/12	W	5:30-6:30P	\$25	509350-01



SPECIAL OLYMPICS

SPECIAL OLYMPICS BOWLING

Age 8+. Open to participants with special needs and their peers. Equipment fee: \$12 to be paid weekly. Program held at Bowl-O-Rama in Newington. Unified Partners must complete and submit a Class A Volunteer form and Unified Partner form. Min/Max: 6/12. No class 12/28. Bowl-O-Rama.

Date	Day	Time	Fee	Code
12/14-2/1	Sa	10:30A-12:30P	\$32	309040-01



SPECIAL OLYMPICS TRACK & FIELD

Open to individuals with special needs. Athletes may train in walking or running events, running or standing long jump, softball throw, shot put or turbo javelin. Please come in appropriate attire and bring a water bottle. Min/Max: 6/12. No class 4/16. Wethersfield High School.

Date	Day	Time	Fee	Code
Age 21+				
4/2-6/4	W	5:30-6:45P	\$37	509220-01
Age 8-21				
4/2-6/4	W	5:30-6:45P	\$37	509220-02

SPECIAL OLYMPICS FLOOR BALL

Age 8+. Open to individuals with special needs and their peers. Participants will engage in fun beginner group instruction and play. Please come in appropriate attire, bring a small towel for perspiration, and a water bottle. Min/Max: 6/10. No class 2/18. Pitkin Community Center.

Date	Day	Time	Fee	Code
1/27-2/25	Tu	5:45-6:45P	\$40	309175-01



DID YOU KNOW?

Therapeutic Recreation Programs and inclusion services are provided by Parks and Recreation for people with disabilities from age 3 through senior citizens. The department facilitates these opportunities for active participation and inclusion on a variety of levels, and are designed to meet an individual's needs and interests.

Year round programs provide unique experience for after school, vacation days, summer camps, special Rec Club trips and Special Olympics training.

For more information regarding Therapeutic Recreation programs please contact Therapeutic Recreation Supervisor Jahlim Cuttino at 860-721-2765 or jahlim.cuttino@wethersfieldct.gov

When registering for TR programs please be sure to fill out the Therapeutic Recreation Program Supplemental Registration Form on the second to last page.

YOUTH/YOUNG ADULTS PROGRAM

Age 8-21. Kids and young adults will be actively involved in different activities depending on the day. Activities such as fitness, sports, arts & crafts, dance, yoga and much more. Min/Max: 6/10. Pitkin Community Center.

Date	Day	Time	Res/Non-Res	Code
9/24-5/27	Tu	2:15-5:15P	\$120/\$150	209280-01
9/25-5/28	W	2:15-5:15P	\$120/\$150	209280-02

ADULT SOCIAL CLUB

Age 21+. Adults may participate in an ongoing schedule of activities and programs throughout the year which may include theater, museums, dining, shopping, movies, holiday gatherings, game nights, and bowling. Registered adults will provide input and receive a schedule. For additional information, contact Jahlim Cuttino, Therapeutic Recreation Supervisor at 860-721-2765. Min/Max: 1/30. Pitkin Community Center.

Date	Day	Time	Fee	Code
7/1-6/30	M-Su	Various	\$26	109138-01

TLC – PLAYGROUP

Age 1 1/2 - 3 1/2. Child with parent/caregiver. Provides children an opportunity to play with their peers. This is a child's first introduction to organized preschool activities while still in the company of a parent or caregiver. Circle time, exercise activities, songs, show-n-tell, free play, arts & crafts and more. Min/Max: 10/20.

Pitkin Community Center.

No class 2/14, 2/17, 3/31, 4/14, 4/18.

Date	Day	Time	Res/NonRes	Code
1/27-6/2	M	9:00-11:00A	\$185/\$195	410080-01
1/31-5/30	F	9:00-11:00A	\$195/\$205	410080-03

TLC PRESCHOOL MINI CAMP

Age 3-5. Jump, skip, run. Use your imagination as you explore our theme days through free/structured play, crafts and water fun. Bring a snack and water bottle. Dress for fun and sun with sneakers and sunblock.

* Open to preschoolers currently enrolled in our TLC Preschool Thrilling 3's, Fearless 4's or Afternoon Adventurers 4's & 5's.

Min/Max: 10/15. Pitkin Community Center.

Date	Day	Time	Fee	Code
5/27-6/5	Tu-Th	12:00-2:30P	\$165	510090-01

**TLC LEARNING CIRCLE PRESCHOOL:**

Three Year Old's:	Tu,W,Th	9:00A - 11:30A (FILLED)
Three Year Old's:	Tu,W,Th	12:30P - 3:00P
Four Year Old's:	Tu,W,Th	9:00A - 12:15P
Afternoon Adventurers 4's& 5's:	M-Th	12:00 - 2:30P

Call 860-721-2750 for information and fees for the remainder of the school year.



Registration for TLC Preschool 2025-26 school year will begin on March 3, 2025.

Quarterly payments permitted.

TLC MORNING PRESCHOOL 2025-2026

State-licensed preschool. Designed to foster individual growth in all areas of development with emphasis on social, emotional, physical and cognitive abilities. Promotes school readiness skills in a creative and resourceful atmosphere. Includes learning centers, table time, science and nature activities, arts and crafts, circle time, gym time and outdoor fun. Min/Max: 6/18.

Pitkin Community Center. No class 11/4, 11/26, 11/27, 12/23, 12/24, 12/25, 12/30, 12/31, 1/1, 2/17, 4/14, 4/15, 4/16.

		Date	Day	Time	Fee	Code
Thrilling 3's	Sept start	9/9-5/21	Tu-Th	9:00-11:30A	\$2150	210138-01
	Jan start	1/6-5/21	Tu-Th	9:00-11:30A	\$1195	210138-02
	Sept start	9/9-5/21	Tu-Th	12:30-3:00P	\$2150	210138-03
	Jan start	1/6-5/21	Tu-Th	12:30-3:00P	\$1195	210138-04

\$400 due at registration

Fearless 4's	Sept start	9/9-5/21	Tu-Th	9:00A-12:15P	\$2400	210158-01
	Jan start	1/6-5/21	Tu-Th	9:00A-12:15P	\$1335	210158-02

\$500 due at registration

TLC AFTERNOON KINDERGARTEN READINESS PROGRAM 2025-2026

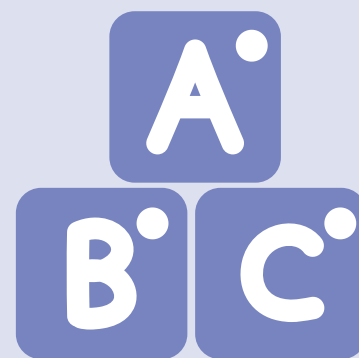
Age 4-5. State licensed preschool. If your child is affected by the new kindergarten cutoff date, this program may meet you and your child's needs. Designed to focus on Kindergarten readiness. Teachers work with each child to meet their individual benchmarks necessary to begin a successful school journey. Min/Max: 8/18. Pitkin Community Center. No class 10/13, 11/4, 11/26, 11/27, 12/22, 12/23, 12/24, 12/25, 12/29, 12/30, 12/31, 1/19, 2/16, 2/17, 4/13, 4/14, 4/15, 4/16.

	Date	Day	Time	Fee	Code
Afternoon Adventurers	9/9-5/21	M-Th	12:00-2:30P	\$2400	210172-01
	1/5-5/21	M-Th	12:00-2:30P	\$1335	210172-02

\$500 due at registration

TLC Preschool

TLC Preschool is committed to providing high quality preschool programs that enhance the overall development of young children. Children are in a state licensed, child-centered environment with teachers who are educated in and have had experience working with preschool age children. Children are provided with activities designed to help them become independent, self-confident, inquisitive, and enthusiastic learners.

**SPARKLER**

is a FREE mobile app for Wethersfield families that helps support children's growth from birth to 5 years old.

Download Sparkler: Play for Parenting from Google Play or the App Store. Visit: <https://www.playsparkler.org/CT>

Register after downloading. Open app and tap Create a New Account. Enter Sparkler access code WEC. Create your account. Add a child to your account. Complete profile questions.

ATTENTION PARENTS OF YOUNG CHILDREN

NEW! FREE PARENTING EDUCATION:

During the Circle of Security Program, parents and caregivers will learn how to support their child's ability to successfully manage emotions. The new program session will take place in winter at the Pitkin Community Center. Dates to be announced. Classes are limited to 12 participants. For more information contact: Kim Bobin, Family & Early Childhood Coordinator, at 860-929-1316 or kbobin@wethersfield.me

PRESCHOOL SCREENINGS

Contact the Board of Education to register child(ren) age 3 or 4 for a preschool screening. The next one is scheduled for January 10th. If there is a concern, you do not have to wait to call. To arrange a screening, call 860-571-8141.

UCONN PEP PARENT LEADERSHIP TRAINING

Each year Wethersfield Public Schools and the Wethersfield Early Childhood Collaborative (WECC) offer free parent leadership training. Classes are limited to 12 participants. To learn more visit: wecc.wethersfield.me/get-involved/parent-leadership-training.

RESOURCE FOR YOUNG FAMILIES - WECC

The Wethersfield Early Childhood Collaborative (WECC) is a diverse group of community members, educators, parents and local organizations that work to prepare young children to succeed in school. Our goal is to ensure that all Wethersfield's children, birth to 5 are healthy, ready for school and involved in our community.

QUESTIONS ABOUT PROGRAMS FOR CHILDREN BIRTH TO FIVE? CONTACT:

Jessica Coelho, WECC Program Coordinator 860-721-2887, jcoelho@wethersfield.me

QUESTIONS ABOUT RESOURCES IN THE COMMUNITY?

CONTACT:

Kim Bobin, Family & Early Childhood Coordinator, 860-929-1316, kbobin@wethersfield.me

Learn more at: wethersfieldchildhood.com

Follow us on Facebook: facebook.com/WethersfieldEarlyChildhoodCollaborative



PAINT CLASSES

WETHERSFIELD TEEN THEATER COMPANY

Age 11-22. This program provides an opportunity to learn about the theater by taking responsibility for the business and creative aspects of running the theater company and producing a summer musical. The Sound of Music is the upcoming show for production in July 2025. Show dates are July 24, 25 & 26. Auditions will be held in the spring. For more information call the Nature Center at 860-721-2780 or email Pamela at pam.molochko@wethersfieldct.gov.



DIY PAINTED HOT COCOA MUG

Age 6-13. Join us for a colorful night of painting and creativity. Instructor will provide some assistance. Participants will be called to pick up their pieces when fired and ready. Min/Max: 10/20. Pitkin Community Center.



Date	Day	Time	Res/NonRes	Code
2/13	Th	6:00-7:30P	\$28/\$34	402500-01

PAINT NIGHT

Age 18+. Join us on this painting adventure. Enjoy an instructor led paint night with friends. All supplies provided. Refreshments will be available for purchase that evening. Min/Max: 20/60. Pitkin Community Center.

Date	Day	Time	Fee	Code
1/17	F	6:00-8:00P	\$30	429012-01

PAINT NIGHT DAYCARE

Age 6-13. Sign the kids up for winter indoor fun with board games and gym games while you paint the night away. Min/Max: 9/20. Pitkin Community Center.

Date	Day	Time	Fee	Code
1/17	F	6:00-8:00P	\$10	429014-01



DOODLE & DESIGN

Age 6-12. Discovery happens with eyes wide open. With artfully educated eyes, students notice design in nature, engineered structures, human-made products and more in the surrounding world. This new aware-ness of art elements and principles enhances the joy of discovery in the visual world. Abrakadoodle artists doodle and design to explore new techniques, exciting materials, art history, and design-loving artists. Min/Max: 6/20. Pitkin Community Center.

No class 2/14.

Date	Day	Time	Res/NonRes	Code
1/24-2/21	F	4:00-4:45P	\$66/\$76	402072-01



MASTER ARTIST CARTOONS

Age 6-12. Come along to America, land of some amazing artists. Create artworks inspired by artists who explore color, celebrate uniqueness, innovate with paint, depict familiar scenes, and highlight different cultures. You will learn about Thiebaud's enticing goodies, Grandma Moses' charming landscapes, Steinberg's fascinating figures and more. Min/Max: 6/20. Pitkin Community Center.

Date	Day	Time	Res/NonRes	Code
3/7-3/28	F	4:00-4:45P	\$66/\$76	402072-02

STEAM SMART

Age 5-8. Artists are SMART kids. There is no better way to engage little ones than through STEAM lessons designed especially for them. Age appropriate Science, Technology, and Engineering blend seamlessly with Art projects. Students explore Math concepts such as geometry, fractions, and size. Young learners have loads of fun engaging in various SMART art concepts to explore. Min/Max: 6/20. Pitkin Community Center. No class 4/18.

Date	Day	Time	Res/NonRes	Code
4/4-5/2	F	4:00-4:45P	\$66/\$76	502072-01

CLAY EXPLORERS

Age 6-12. Experiment with ideas from master sculptors and historical objects. Get inspired by African clay pots, ancient bells, Native North American canoes, Katazryna Kobro sculptures, Claymation characters and much more. Using clay, modern plasticene and Model Magic, students will learn and practice the possibilities of creating unique three-dimensional objects and feel like an accomplished artist. Min/Max: 6/20. Pitkin Community Center. No class 5/23.

Date	Day	Time	Res/NonRes	Code
5/9-6/6	F	4:00-4:45P	\$66/\$76	502072-02



NEXT GENERATION CHESS DAY

Age 8+. Next Generation Chess is a teaching chess club. Join a diverse group of individuals, from young prodigies taking their first steps into the game to seasoned players looking to refine their strategies. A dedicated team of experienced coaches is committed to fostering a love for the game in each and every member. **CANCELLED** Sample our chess day class and connect with the staff. Instructor will share the basics of chess and information about their comprehensive program which ensures that every member, new or advanced, finds their rightful place in the chess community. Min/Max: 8/20. Pitkin Community Center.

Date	Day	Time	Fee	Code
1/30	Th	5:00-6:30P	\$23	429202-01

NEXT GENERATION CHESS

Age 8-Adult. This teaching chess club is a melting pot of diverse individuals, from young prodigies taking their first steps into the game to seasoned players looking to refine their strategies. A dedicated team of experienced coaches is committed to fostering a love for the game in each and every member. Discover a captivating journey of intellectual growth and skill development. Learn the fundamentals of chess in a fun, supportive and interactive way, through engaging lessons, playful activities, and friendly competitions. Minds will flourish and form lifelong friendships. Whether you are a complete novice or a seasoned player, our expert coaches will provide personalized guidance tailored to your individual goals and aspirations. From learning the basics to exploring advanced strategies, our comprehensive program ensures that every member finds their rightful place in the chess community. Min/Max: 10/20. Pitkin Community Center. No class 4/3, 4/15, 4/17, 5/27.

Beginner (ELO rating under 400)

Date	Day	Time	Res/NonRes	Code
2/25-3/20	Tu,Th	5:00-5:45P	\$150/\$170	429200-02
3/25-4/29	Tu,Th	5:00-5:45P	\$150/\$160	529200-01
5/01-5/29	Tu,Th	5:00-5:45P	\$150/\$160	529200-02

Intermediate (ELO rating above 400)

Date	Day	Time	Res/NonRes	Code
2/25-3/20	Tu,Th	6:00-6:45P	\$150/\$170	429201-02
3/25-4/29	Tu,Th	6:00-6:45P	\$150/\$160	529201-01
5/01-5/29	Tu,Th	6:00-6:45P	\$150/\$160	529201-02



GREEN KIDS IN A COLORFUL WORLD CAMP

Green kids care about the environment and so does Abakadoodle. Our Green Kids create French Santon statues inspired by peasants from the Provence region of France, CD art in the style of Piet Mondrian, Chilean Rain Sticks, and Tiffany Lamp sculptures, while learning about fine artists such as Renoir, Gustav Klimt and Georges Braque. Each work of art is a masterpiece made with recycled materials that both decorate our world and help to keep our environment clean. We use many, many colors, but our emphasis is on GREEN. Min/Max: 6/20. Pitkin Community Center.

Age 3-5

Date	Day	Time	Res/NonRes	Code
4/14	M	9:00A-12:00P	\$44/\$50	502201-01
4/15	Tu	9:00A-12:00P	\$44/\$50	502202-01
4/16	W	9:00A-12:00P	\$44/\$50	502203-01
4/17	Th	9:00A-12:00P	\$44/\$50	502204-01

Age 6-12

Date	Day	Time	Res/NonRes	Code
4/14	M	9:00A-12:00P	\$44/\$50	502201-02
4/15	Tu	9:00A-12:00P	\$44/\$50	502202-02
4/16	W	9:00A-12:00P	\$44/\$50	502203-02
4/17	Th	9:00A-12:00P	\$44/\$50	502204-02



ART IN BLOOM

Age 6-12. Day 1: Create a card inspired by Beatrix Potter's illustrations. Day 2: Learn to paint hearts and butterflies in the style of Damien Hirst. Day 3: Get inspired by Kusama art with polka dots and Piet Mondrian's oval creations. Day 4: Create a metallic sculpture using Model Magic and more. Have fun while you let your creativity bloom. Min/Max: 6/20. Pitkin Community Center.

Date	Day	Time	Res/NonRes	Code
4/14	M	1:00-4:00P	\$44/\$50	502201-03
4/15	Tu	1:00-4:00P	\$44/\$50	502202-03
4/16	W	1:00-4:00P	\$44/\$50	502203-03
4/17	Th	1:00-4:00P	\$44/\$50	502204-03



DANCE VACATION CAMP

Grade K-6. Join us if you want more dance time or just want to try something new. You will work with staff to try different styles. Put on a short show during the last day of the program. Bring a small snack and water bottle. Min/Max: 7/20. Pitkin Community Center.

Date	Day	Time	Res/NonRes	Code
4/15-4/17	Tu-Th	8:30A-12:30P	\$100/\$110	502001-01



SPRING DAY LUNCH CRUNCH

Grade K-6. Register and stay for lunch when you sign up for BOTH Abakadoodle Green Kids in a Colorful World and Art in Bloom classes. Staff will supervise while you socialize with new and old friends. Bring a bagged lunch. Outdoor playscape will be used for break time weather permitting in the spring Min/Max: 6/20. Pitkin Community Center.

Date	Day	Time	Res/NonRes	Code
4/14-4/17	M-Th	12:00-1:00P	\$20	529100-02



Keane on Kids After School Enrichment Program continues with a full array of winter and spring offerings. The following pages list the programs at each school. Remember, students can only register for programs offered at their school.



10 FACTS

ABOUT THE KEANE KIDS AFTER SCHOOL PROGRAM



1

The Keane Kids After School Program began 8 years ago. Our commitment is to consistently provide a variety of After School Enrichment programs at all Wethersfield Elementary Schools in a safe and fun environment in which youth can come together to participate in athletic, academic, and social programs with the support and guidance of caring adults.

2

Every Wethersfield Elementary School has Keane After School programs. They are a wide variety of topics to appeal to many children.

3

After School programs are offered for students in all grades. Sometimes limited to specific grades depending on the program requirement.



4

Instructors are professionals hired from excellent afterschool program providers, local businesses with specific expertise and even your school teachers!



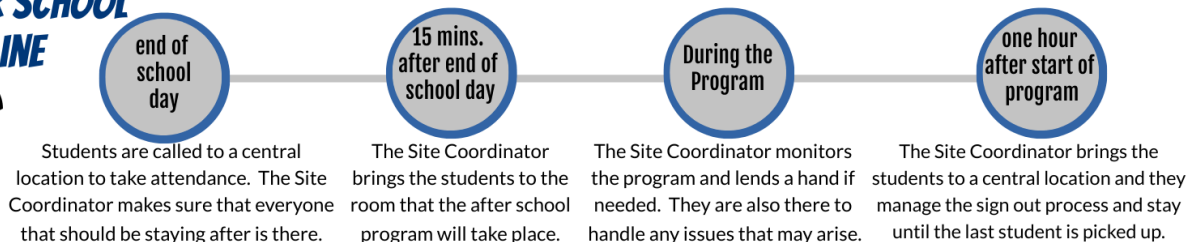
5

Every school has a Site Coordinator that manages the after-school time and takes care of the students.



AFTER SCHOOL TIMELINE

6



7

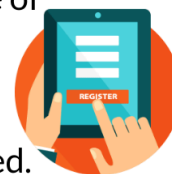
There are 2 after-school sessions.

Fall: Brochure available mid-August, Registration begins early September

Winter/Spring: Brochure available mid-December, Registration begins early January.

8

Each school has a page of programs listed in the Parks and Recreation brochure. Online registration is preferred.



<https://wethersfieldct.gov/recreation>

9

Students can register for any program that takes place at their school through Parks and Recreation.



No program is more than \$10/class.
For example: 6 week class = \$60

10

We are always interested in your feedback and new program ideas!

Our contact information:
Caroline Fazzina, Director
Keane on Kids Afterschool
Enrichment Program
kfafterschoolenrichment@gmail.com



Richard M. Keane Foundation
<https://keanefoundation.org/>

Charles Wright Elementary School

186 Nott Street
(860) 571-8350



These programs are
open to students at
Charles Wright.



Glenn Horter - Principal

Regular School Day:

8:30A - 3:00P

Minimum School Day:

8:30A - 12:55P

Student Drop Off:

8:10A

Hanmer PTO:

cwpto.wordpress.com

Did you know?

We have teamed with the YMCA to offer after care (until 6:00P) for an additional fee at Emerson Williams and Hanmer Schools.

For more information, please contact the Y at 860-521-5830.

HAWK FITNESS FUN

A great opportunity for students to increase their fitness level through participation in educational games. Focus on developing students' flexibility, muscular strength and aerobic endurance by participating in fun and exciting physical activities. Taught by PE teacher Jim Coursey. Min/Max: 12/²⁵. No class 2/17, 3/20, 3/31, 4/14, 4/17, 5/26.

Date	Day	Time	Fee	Code
Grade K-2				
1/27-3/10	M	3:15-4:15P	\$60	408550-01
3/17-4/28	M	3:15-4:15P	\$50	508550-01
5/5-6/9	M	3:15-4:15P	\$50	508550-02
Grade 3-6				
1/30-3/6	Th	3:15-4:15P	\$60	408551-01
3/13-5/1	Th	3:15-4:15P	\$60	508551-01
5/8-6/5	Th	3:15-4:15P	\$50	508551-02

PLAY AND CREATE

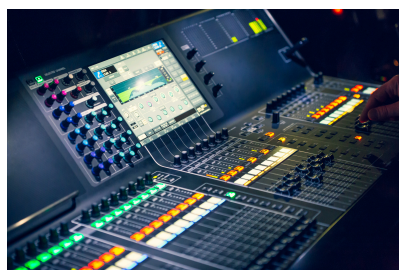
Grade 1-6. Looking for a fun, hands-on break from screens after school? The club offers opportunities for kids to unleash their creativity through imaginative, screen-free activities. Each session is packed with engaging projects like arts and crafts, classic board games, outdoor games, and interactive group challenges. Kids will explore their creativity, problem-solving, and teamwork skills, all while having fun in a relaxed, tech-free environment. Whether they are painting, crafting, or playing, this club encourages kids to discover new interests and connect with friends face-to-face. Min/Max: 8/20. No class 3/5 & 3/19.

Date	Day	Time	Fee	Code
1/22-3/26	W	3:15-4:15P	\$40	411600-01

MUSIC MIXING 101

Grade 3-6. Get ready to spin and groove in our Fun DJ music mixing Class. Designed for young music enthusiasts, this exciting program teaches the basics of DJing in a fun and interactive way. Kids will learn to mix tracks, create their own beats, and rock the dance floor like a pro. Laptops, DJ controllers, and headphones are provided. With hands-on activities and plenty of play, it's the perfect class for budding DJs to explore their creativity and love for music. No experience is necessary - just bring your energy and get ready to have a blast. Min/Max: 6/12.

Date	Day	Time	Fee	Code
4/29-6/3	Tu	3:15-4:15P	\$60	511165-01



COOKING

Grade 1-3. Interested in culinary arts? This program includes demonstrations, nutrition education and hands-on classes in the preparation of healthy snacks. Hosted by Wethersfield Dining Service's chefs and dietitians. Min/Max: 6/12. No class 4/14.

Date	Day	Time	Fee	Code
4/28-5/12	M	3:15-4:15P	\$30	511065-01



FROZEN JR. MUSICAL CAST

Grade 4-6. Do you want to build a snowman? You will love this fanciful and heartwarming stage adaptation of the celebrated animated film. Join Anna, Elsa, Olaf, Sven, and all of your favorite characters as they embark on an epic, ice-filled journey of self-discovery, camaraderie, and the real meaning of true love. Experience auditioning for a role, being coached through the rehearsal process and work as an ensemble to produce a play. All workshops, rehearsals, tech and performances are mandatory. The Musical should not conflict with festival chorus, band or orchestra. Audition/Rehearsals: Monday*, Tuesday, Wednesday* and Thursday 3:15 - 4:45P. Beginning 1/14, 1/16, 1/21, 1/23, 1/28, 1/30, 2/4, 2/6, 2/11, 2/13, 2/20, 2/25, 2/27, 3/4, 3/6, 3/11, 3/13, 3/25, 3/27, 4/1, 4/2, 4/3, 4/7, 4/8, 4/9, 4/10. *Wednesday Half Day 4/2 meets 1:10 to 4:00P. *Extra Monday and Wednesday 4/7, 4/9. Tech Week: Monday, 4/21 - Thursday, 4/24 from 3:15 - 6:00P. Performances: 4/25 at 7:00P, 4/26 at 2:00P. Min/Max: 20/30.

Date	Day	Time	Fee	Code
1/14-4/24	Tu-Th	3:15-4:45P	\$150	411166-01

Please review the program requirements prior to registering as there is a large time and financial commitment. Your student must be available for all of the dates listed. Please note that the registration fee does not solely cover program costs. The Keane Foundation supplements after school programs in addition to providing financial assistance.

RUNNING CLUB

Grade 3-6. This program will develop and encourage children of all running abilities to progress from their current level to completing a 5K (3.1 miles). Set goals and build up endurance and self-esteem while preparing to participate (run, jog or walk) in a 5K. Min/Max: 5/50. No class 5/7.

Date	Day	Time	Fee	Code
4/23-5/28	W	3:15-4:15P	\$25	533040-01



SENSE-SATIONAL SENSES

Grade K-1. In this series, students will play and explore our senses as we uncover some of the many ways our bodies and brains take in information about the world around us. Together we will navigate mazes, explore how animals' sense of smell differs from ours, test our sense of balance and range of movement, explore moving shapes and shadows, improve our memory skills, and much more as we discover all the ways we experience the world around us. Min/Max: 10/25. No class 5/7.

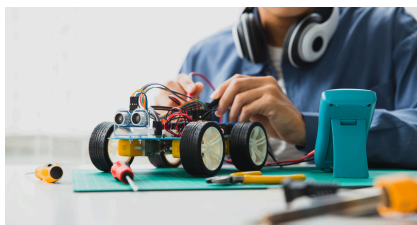
Date	Day	Time	Fee	Code
4/23-6/4	W	3:15-4:15P	\$60	511315-01



TOY LAB

Grade 2-5. This series of programs puts students in the role of toy researchers and engineers at a company investigating the properties of different kinds of toys. They will unpack the science behind stretchy toys, electronic toys, toys that help you create art, and many more. They will work collaboratively to discover, understand, and appreciate that there is a lot of science and engineering behind the things that help us have fun. Min/Max: 10/25. No class 3/18 & 4/15.

Date	Day	Time	Fee	Code
3/11-4/22	Tu	3:15-4:15P	\$50	411246-01



GARDEN CLUB

Grade K-6. Learn an abundance of gardening topics such as planting, germination, transplanting, care, and harvesting as well as topics such as pollinators and good and bad bugs. Activities will be done through hands on learning. Children will partner up, giving older students an opportunity to mentor younger kids while they garden together and share in the harvest. Min/Max: 10/20.

Date	Day	Time	Fee	Code
5/1-5/29	Th	3:15-4:15P	\$50	511207-01



LEGO STEM EXPLORATIONS

Grade 3-5. Master your engineering skills with Play-Well TEKologies and tens of thousands of LEGO® parts. Apply real-world concepts in physics, engineering, and architecture through engineer-designed projects. Projects are rotated seasonally to ensure that even returning students get a new experience, so join us to design and build as never before and explore your craziest ideas. Min/Max: 10/16. No class 2/17.

Date	Day	Time	Fee	Code
1/27-3/10	M	3:15-4:15P	\$60	411549-01



CHESS CLUB

Grade 1-6. Learn to play the game of chess. This class is for players who want to learn new strategies and ways to win as well as other chess "secrets." Beginners and those who have never played are also welcome. Learn all the basic moves of the chess pieces, their values, piece interaction, and how to win (checkmate). Min/Max: 10/14.

Date	Day	Time	Fee	Code
1/22-2/26	W	3:15-4:15P	\$60	411035-01



Charles Wright Elementary School

186 Nott Street



These programs are open to students at Charles Wright.



Keane on Kids After School Enrichment Program's vision is to consistently provide a variety of After School Enrichment programs at all Wethersfield Elementary Schools in a safe and fun environment in which all children can participate in athletic, academic and social programs with the support and guidance of caring adults.

Programs will vary seasonally at each school. In addition, there will be a site coordinator at each school who will greet the children at the end of the school day, ensure that the after school program runs smoothly and monitor safe dismissal at the end of the program.



Emerson Williams Elementary School

461 Wells Road
(860) 571-8360



*These programs are
open to students at
Emerson Williams.*



Neela Thakur - Principal

Regular School Day:

8:30A - 3:00P

Minimum School Day:

8:30A - 12:55P

Student Drop Off:

8:10A

Emerson Williams PTO:

ewpto.com

Did you know?

We have teamed with the YMCA to offer after care (until 6:00P) for an additional fee at Emerson Williams and Hanmer Schools.

For more information, please contact the Y at 860-521-5830.

SPORTS AND GAMES

Grade K-2. Skyhawks provides a wide variety of fun, safe and positive programs that emphasize critical lessons in sports and life, such as teamwork, respect and sportsmanship. Programs will give each child a positive introduction into sports while fostering a lifelong love for an active, healthy lifestyle. Students will take part in a variety of skill-building games and activities to give each athlete a complete understanding and overview of many different popular sports and games. Sports and games include capture the flag, soccer, ultimate frisbee, basketball, kickball, baseball, 4 square, flag football, team handball and many more. Kids will play 2-4 different games/sports each week. Min/Max: 6/15. No class 4/16 & 5/7.

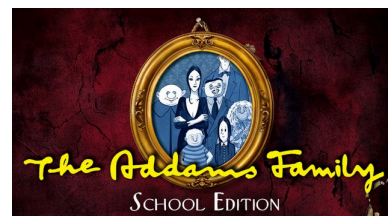
Date	Day	Time	Fee	Code
4/9-5/28	W	3:15-4:15P	\$60	512205-01



CHESS CLUB

Grade 1-6. Learn to play the game of chess. This class is for players who want to learn new strategies and ways to win as well as other chess "secrets." Beginners and those who have never played are also welcome. Learn all the basic moves of the chess pieces, their values, piece interaction, and how to win (checkmate). Min/Max: 10/15. No class 2/17.

Date	Day	Time	Fee	Code
1/27-3/10	M	3:15-4:15P	\$60	412035-01



ADDAMS FAMILY MUSICAL CAST

Grade 5-6. Celebrate the wackiness in every family with our best-selling Broadway musical adapted for school-age performers! Wednesday Addams, the ultimate princess of darkness, has grown up and fallen in love with a sweet, smart young man from a respectable family whom her parents have never met. She confides in her father and begs him not to tell her mother. Now, Gomez Addams must do something he's never done before- keep a secret from his beloved wife, Morticia. Everything will change for the whole family on the fateful night they host a dinner for Wednesday's "normal" boyfriend and his parents. Experience auditioning for a role, being coached through the rehearsal process and work as an ensemble to produce a play. All workshops, rehearsals, tech and performances are mandatory. The Musical should not conflict with festival chorus, band or orchestra.

Audition/Rehearsals: Tuesday and Thursday 3:15 - 4:45P. 1/14, 1/16, 1/21, 1/23, 1/28, 1/30, 2/4, 2/6, 2/11, 2/13, 2/20, 2/25, 2/27, 3/4, 3/6, 3/11, 3/13, 3/25, 3/27 4/1, 4/3, 4/8, 4/10, 4/22, 4/24, 4/29, 5/1.

Tech Week: Monday, 5/5 - Thursday, 5/8, 3:15 - 6:00P. Performances: 5/9 at 7:00P and 5/10 at 2:00P. Min/Max: 20/30.

Date	Day	Time	Fee	Code
1/14-5/8	Tu,Th	3:15-4:45	\$150	412166-01

Please review the program requirements prior to registering as there is a large time and financial commitment. Your student must be available for all of the dates listed. Please note that the registration fee does not solely cover program costs. The Keane Foundation supplements after school programs in addition to providing financial assistance.

COOKING

Grade 1-3. Interested in culinary arts? This program includes demonstrations, nutrition education and hands-on classes in the preparation of healthy snacks. Hosted by Wethersfield Dining Service's chefs and dietitians. Min/Max: 6/12.

Date	Day	Time	Fee	Code
1/21-2/4	Tu	3:15-4:15P	\$30	412065-01



CODING WITH MINECRAFT

Grade 2-5. Using the Minecraft Education edition, students will complete lesson plans and solve code using either Python or drag-and-drop coding. Geared for new students and focusing on beginner concepts. Projects and concepts will repeat from previous lessons. Min/Max: 6/10. No class 3/31 & 4/14.

Date	Day	Time	Fee	Code
3/17-5/5	M	3:15-4:15P	\$60	512071-01



MUSIC MIXING 101

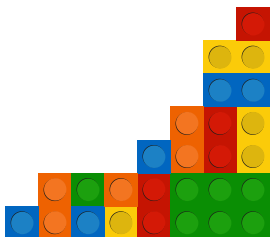
Grade 3-6. Get ready to spin and groove in our Fun DJ music mixing Class. Designed for young music enthusiasts, this exciting program teaches the basics of DJing in a fun and interactive way. Kids will learn to mix tracks, create their own beats, and rock the dance floor like a pro. Laptops, DJ controllers, and headphones are provided. With hands-on activities and plenty of play, it's the perfect class for budding DJs to explore their creativity and love for music. No experience is necessary - just bring your energy and get ready to have a blast. Min/Max: 6/12.

Date	Day	Time	Fee	Code
5/14-6/11	W	3:15-4:15P	\$50	512165-01

LEGO STEM EXPLORATIONS

Grade 3-5. Master your engineering skills with Play-Well TEKologies and tens of thousands of LEGO® parts. Apply real-world concepts in physics, engineering, and architecture through engineer-designed projects. Projects are rotated seasonally to ensure that even returning students get a new experience, so join us to design and build as never before and explore your craziest ideas. Min/Max: 10/16.

Date	Day	Time	Fee	Code
5/1-6/5	Th	3:15-4:15P	\$60	412549-01



PLAY & CREATE

Grade 3-6. Looking for a fun, hands-on break from screens after school? The club offers opportunities for kids to unleash their creativity through imaginative, screen-free activities. Each session is packed with engaging projects like arts and crafts, classic board games, outdoor games, and interactive group challenges. Kids will explore their creativity, problem-solving, and teamwork skills, all while having fun in a relaxed, tech-free environment. Whether they are painting, crafting, or playing, this club encourages kids to discover new interests and connect with friends face-to-face. Min/Max: 8/20. No class 3/5 & 3/19.

Date	Day	Time	Fee	Code
1/22-3/26	W	3:15-4:15P	\$40	412600-01

RUNNING CLUB

Grade 3-6. This program will develop and encourage children of all running abilities to progress from their current level to completing a 5K (3.1 miles). Set goals and build up endurance and self-esteem while preparing to participate (run, jog or walk) in a 5K. Min/Max: 5/50.

Date	Day	Time	Fee	Code
4/29-5/27	Tu	3:15-4:15P	\$25	533041-01



Emerson Williams Elementary School

461 Wells Road



These programs are open to students at Emerson Williams.



Keane on Kids After School Enrichment Program's vision is to consistently provide a variety of After School Enrichment programs at all Wethersfield Elementary Schools in a safe and fun environment in which all children can participate in athletic, academic and social programs with the support and guidance of caring adults.

Programs will vary seasonally at each school. In addition, there will be a site coordinator at each school who will greet the children at the end of the school day, ensure that the after school program runs smoothly and monitor safe dismissal at the end of the program.



Hanmer Elementary School

50 Francis Street
(860) 571-8370



These programs are
open to students at
Hanmer.



Patrick Cone - Principal

Regular School Day:

8:55A - 3:25P

Minimum School Day:

8:55A - 1:20P

Student Drop Off:

8:35A

Hanmer PTO:

hanmerpto.weebly.com

Did you know?

We have teamed with the YMCA to offer after care (until 6:00P) for an additional fee at Emerson Williams and Hanmer Schools.

For more information, please contact the Y at 860-521-5830.

AFTERNOON ATHLETES

A great opportunity for students to increase their fitness level through participation in educational games. Focus on developing students' flexibility, muscular strength and aerobic endurance by participating in fun and exciting physical activities. Taught by teacher Jeremy McPhee. Min/Max: 12/24. No class 2/17, 3/5, 3/19, 3/31, 4/2, 4/14, 4/16, 5/7, 5/26.

Date	Day	Time	Fee	Code
Grade K-2				
1/27-3/10	M	3:30-4:30P	\$60	408520-01
3/17-4/28	M	3:30-4:30P	\$50	508520-01
5/5-6/9	M	3:30-4:30P	\$50	508520-02

Grade 3-6

1/22-2/19	W	3:30-4:30P	\$50	408521-01
2/26-4/23	W	3:30-4:30P	\$50	508521-01
4/30-6/4	W	3:30-4:30P	\$50	508521-02



ART: PETS & PUPPIES

Grade 1-3. Little ones love their soft, furry, feathery, purr-fect pets. It is always a good time to learn more about pets through art. Get your pouncing paws ready to explore painting, collage, stamping, 3D art and more. Have a bow-wow of a time learning about pets that range from large barnyard and pasture animals to purring and barking friends and little critters kept in the home. Min/Max: 6/20. No class 2/17.

Date	Day	Time	Fee	Code
1/27-3/10	M	3:40-4:40P	\$60	413011-01

TOY LAB

Grade 2-5. This series of programs puts students in the role of toy researchers and engineers at a company investigating the properties of different kinds of toys. They will unpack the science behind stretchy toys, electronic toys, toys that help you create art, and many more. They will work collaboratively to discover, understand, and appreciate that there is a lot of science and engineering behind the things that help us have fun. Min/Max: 10/25.

Date	Day	Time	Fee	Code
1/22-2/26	W	3:40-4:40P	\$60	413246-01



COOKING

Grade 1-3. Interested in culinary arts? This program includes demonstrations, nutrition education and hands-on classes in the preparation of healthy snacks! Hosted by Wethersfield Dining Service's chefs and dietitians. Min/Max: 6/8.

Date	Day	Time	Fee	Code
5/22-6/5	Th	3:40-4:40P	\$30	513065-01



WILLY WONKA JR. MUSICAL CAST

Grade 4-6. The delicious adventures of Willy Wonka's chocolate factory light up the stage in this captivating adaptation of Roald Dahl's fantastical tale. Featuring the enchanting songs from the 1971 film, in addition to a host of fun new songs, Roald Dahl's Willy Wonka JR. is a scumdidlyumptious musical guaranteed to delight everyone's sweet tooth. Experience auditioning for a role, being coached through the rehearsal process and work as an ensemble to produce a play. All workshops, rehearsals, tech and performances are mandatory. The Musical should not conflict with festival chorus, band or orchestra.

Audition/Rehearsals: Tuesday and Thursday 3:40 - 5:00P. 1/14, 1/16, 1/21, 1/23, 1/28, 1/30, 2/4, 2/6, 2/11, 2/13, 2/20, 2/25, 2/27, 3/4, 3/6, 3/11, 3/13, 3/25, 3/27, 4/1, 4/3, 4/8, 4/10, 4/22, 4/24. Tech Week: Monday, 4/28 - Thursday, 5/1, 3:30 - 6:00P. Performances: 5/2 at 7:00P, 5/3 at 2:00P. Min/Max: 20/30.

Date	Day	Time	Fee	Code
1/14-5/1	Tu,Th	3:40-5:00P	\$150	413166-01

Please review the program requirements prior to registering as there is a large time and financial commitment. Your student must be available for all of the dates listed. Please note that the registration fee does not solely cover program costs. The Keane Foundation supplements after school programs in addition to providing financial assistance.

PLAY AND CREATE

Grade 1-6. Looking for a fun, hands-on break from screens after school? The club offers opportunities for kids to unleash their creativity through imaginative, screen-free activities. Each session is packed with engaging projects like arts and crafts, classic board games, outdoor games, and interactive group challenges. Kids will explore their creativity, problem-solving, and teamwork skills, all while having fun in a relaxed, tech-free environment. Whether they are painting, crafting, or playing, this club encourages kids to discover new interests and connect with friends face-to-face. Min/Max: 8/20. No class 2/18 & 3/18.

Date	Day	Time	Fee	Code
1/21-3/25	Tu	3:40-4:40P	\$40	413600-01



GARDEN CLUB

Grade K-6. Children will learn an abundance of gardening topics such as planting, germination, transplanting, care, and harvesting as well as topics such as pollinators and good and bad bugs plus lots more. These fun activities will be done through hands on learning. Children will partner up, giving older students an opportunity to mentor younger kids while they garden together and share in its harvest. Min/Max: 10/20.

Date	Day	Time	Fee	Code
5/1-5/29	Th	3:40-4:40P	\$50	513207-01



TENNIS

Grade K-3. Students will learn the fundamentals of tennis. This class instills good stroke technique and assessment of space and direction. Low compression balls and smaller (25") racquets will be used. Min/Max: 6/8.

Date	Day	Time	Fee	Code
4/29-6/3	Tu	3:40-4:40P	\$60	513515-01



RUNNING CLUB

Grade 3-6. This program will develop and encourage children of all running abilities to progress from their current level to completing a 5K (3.1 miles). Set goals and build up endurance and self-esteem while preparing to participate (run, jog or walk) in a 5K. Min/Max: 5/50. No class 5/23.

Date	Day	Time	Fee	Code
4/25-5/30	F	3:30-4:30P	\$25	533042-01



LEGO STEM EXPLORATION

Grade 3-5. Master your engineering skills with Play-Well TEKnologies and tens of thousands of LEGO parts. Apply real-world concepts in physics, engineering, and architecture through engineer-designed projects. Projects are rotated seasonally to ensure that even returning students get a new experience, so join us to design and build as never before and explore your craziest ideas. Min/Max: 10/16. No class 3/31 & 4/14.

Date	Day	Time	Fee	Code
3/17-5/5	M	3:40-4:40P	\$60	514549-01



Hanmer Elementary School

50 Francis Street



These programs are open to students at Hanmer.



Keane on Kids After School Enrichment Program's vision is to consistently provide a variety of After School Enrichment programs at all Wethersfield Elementary Schools in a safe and fun environment in which all children can participate in athletic, academic and social programs with the support and guidance of caring adults.

Programs will vary seasonally at each school. In addition, there will be a site coordinator at each school who will greet the children at the end of the school day, ensure that the after school program runs smoothly and monitor safe dismissal at the end of the program.



Highcrest Elementary School

95 Highcrest Road
(860) 571-8340



These programs are
open to students at
Highcrest.



Christine Mori - Principal

Regular School Day:

8:55A - 3:25P

Minimum School Day:

8:55A - 1:20P

Student Drop Off:

8:35A

Highcrest PTO:

highcrest-elementary-
school-

pto.constantcontactsites.co
m

Did you know?

We have teamed with the
YMCA to offer after care
(until 6:00P) for an
additional fee at Emerson
Williams and Hanmer
Schools.

For more information,
please contact the Y at
860-521-5830.

EARLY MORNING BULLDOG FITNESS

Grade K-6. Each session before school will give your child an opportunity to develop their flexibility, strength and endurance. Students will participate in a variety of fun fitness activities to energize them for the day. Please drop your children off at the front building entrance. Min/Max: 12/35.

No class 2/17, 3/20, 3/31, 4/14, 4/17, 5/26.

Date	Day	Time	Fee	Code
1/27-3/10	M	8:00-8:35A	\$35	408345-01
3/17-4/28	M	8:00-8:35A	\$30	508345-01
5/5-6/9	M	8:00-8:35A	\$30	508345-03
1/30-3/6	Th	8:00-8:35A	\$35	408345-02
3/13-5/1	Th	8:00-8:35A	\$35	508345-02
5/8-6/5	Th	8:00-8:35A	\$30	508345-04

SUPER ATHLETES

A great opportunity for students to increase their fitness level through participation in educational games. Focus on developing students' flexibility, muscular strength and aerobic endurance by participating in fun and exciting physical activities. Taught by PE teacher Kevin Kobelski. Min/Max: 15/35.

No class 2/17, 3/20, 3/31, 4/14, 4/17, 5/26.

Date	Day	Time	Fee	Code
Grade K-2				
1/27-3/10	M	3:30-4:30P	\$60	408540-01
3/17-4/28	M	3:30-4:30P	\$50	508540-01
5/5-6/9	M	3:30-4:30P	\$50	508540-02
Grade 3-6				
1/30-3/6	Th	3:30-4:30P	\$60	408541-01
3/13-5/1	Th	3:30-4:30P	\$60	508541-01
5/8-6/5	Th	3:30-4:30P	\$50	508541-02

SUPER ATHLETES SPRING CAMP

Grade K-6. The exciting 4 day camp will focus on developing students' flexibility, strength and aerobic endurance through fun, exciting, athletic activities. Camp will be taught by Highcrest School Physical Education teacher Mr. Kobelski. Min/Max: 15/35.

Date	Day	Time	Fee	Code
4/14-4/17	M-Th	9:00A-12:00P	\$90	508600-01



PLAY AND CREATE

Grade 3-6. Looking for a fun, hands-on break from screens after school? The club offers opportunities for kids to unleash their creativity through imaginative, screen-free activities. Each session is packed with engaging projects like arts and crafts, classic board games, outdoor games, and interactive group challenges. Kids will explore their creativity, problem-solving, and teamwork skills, all while having fun in a relaxed, tech-free environment. Whether they are painting, crafting, or playing, this club encourages kids to discover new interests and connect with friends face-to-face. Min/Max: 8/20.

No class 3/5 and 3/19.

Date	Day	Time	Fee	Code
1/22-3/26	W	3:40-4:40P	\$40	414600-01



CHESS CLUB

Grade 1-6. Learn to play the game of chess. This class is for players who want to learn new strategies and ways to win as well as other chess "secrets." Beginners and those who have never played are also welcome. Learn all the basic moves of the chess pieces, their values, piece interaction, and how to win (checkmate). Min/Max: 10/14. No class 4/15.

Date	Day	Time	Fee	Code
3/25-5/6	Tu	3:40-4:40P	\$60	514035-01

RUNNING CLUB

Grade 3-6. This program will develop and encourage children of all running abilities to progress from their current level to completing a 5K (3.1 miles). Set goals and build up endurance and self-esteem while preparing to participate (run, jog or walk) in a 5K. Min/Max: 5/50. No class 5/23.

Date	Day	Time	Fee	Code
4/25-5/30	F	3:30-4:30P	\$25	533043-01

CODING WITH MINECRAFT

Grade 2-5. Using the Minecraft Education edition, students will complete lesson plans and solve code using either Python or drag-and-drop coding. Geared for new students and focusing on beginner concepts. Projects and concepts will repeat from previous lessons. Min/Max: 6/10. No class 4/17.

Date	Day	Time	Fee	Code
5/13-6/10	Th	3:40-4:40P	\$50	514071-01



ART: ABRA-CLAY-DOODLE

Grade 3-6. Gather information, be inspired, and try ideas from famous artists and movements. Masterworks from ancient through modern art will boost your art-making confidence. Explore various projects using air dry clay, Crayola Model Magic, Modeling Clay, painting with clay, and more. Min/Max: 6/20. No class 3/31 and 4/14.

Date	Day	Time	Fee	Code
3/24-5/12	M	3:40-4:40P	\$60	514012-01



COOKING

Grade 1-3. Interested in culinary arts? This program includes demonstrations, nutrition education and hands-on classes in the preparation of healthy snacks! Hosted by Wethersfield Dining Service's chefs and dietitians. Min/Max: 5/12.

Date	Day	Time	Fee	Code
3/3-3/17	M	3:40-4:40P	\$30	514065-01



GARDEN CLUB

Grade K-6. In this five week Garden Club, clean out the Highcrest garden beds and plant them for the summer months. Plant carrot seeds and radish seeds. Upcycle milk jugs and make mini garlic gardens. Make fairy houses from upcycled milk cartons. Take a field trip to Mrs. Aglieco's house to meet the Chickens. Parents are welcome to join us. Study and hold real live composting worms. Create delicious snacks using vegetables. Enjoy the outside as much as possible. Min/Max: 10/20.

Date	Day	Time	Fee	Code
5/1-5/29	Th	3:40-4:40P	\$50	514207-01



SENSE-SATIONAL SENSES (UPDATED)

Grade 3-6. In this series of programs, students will learn the basics of robotics and coding using the Dash robot. They will work in teams, strengthening their collaboration, communication, and critical thinking skills as they work to code their "rover" to explore the surface of the moon and solve challenges together to build a lunar habitat.

Date	Day	Time	Fee	Code
1/21-3/4	Tu	3:40-4:40P	\$60	414315-01

Highcrest Elementary School

95 Highcrest Road



*These programs are
open to students at
Highcrest.*



Keane on Kids After School Enrichment Program's vision is to consistently provide a variety of After School Enrichment programs at all Wethersfield Elementary Schools in a safe and fun environment in which all children can participate in athletic, academic and social programs with the support and guidance of caring adults.

Programs will vary seasonally at each school. In addition, there will be a site coordinator at each school who will greet the children at the end of the school day, ensure that the after school program runs smoothly and monitor safe dismissal at the end of the program.



Webb Elementary School

51 Willow Street
(860) 571-8340



These programs are
open to students at
Webb.



Kenneth Craig - Principal

Regular School Day:

8:55A - 3:25P

Minimum School Day:

8:55A - 1:20P

Student Drop Off:

8:35A

Webb PTO:

webbpto.com

Did you know?

We have teamed with the YMCA to offer after care (until 6:00P) for an additional fee at Emerson Williams and Hanmer Schools.

For more information, please contact the Y at 860-521-5830.

COOKING

Grade 1-3. Interested in culinary arts? This program includes demonstrations, nutrition education and hands-on classes in the preparation of healthy snacks. Hosted by Wethersfield Dining Service's chefs and dietitians. Min/Max: 6/12.

Date	Day	Time	Fee	Code
2/12-2/26	W	3:40-4:40P	\$30	415065-01



TENNIS

Grade K-3. Students will learn the fundamentals of tennis. This class instills good stroke technique and assessment of space and direction. Low compression balls and smaller (25") racquets will be used. Min/Max: 6/8. No class 5/23.

Date	Day	Time	Fee	Code
5/2-6/6	F	3:40-4:40P	\$60	515515-01

RUNNING CLUB

Grade 3-6. This program will develop and encourage children of all running abilities to progress from their current level to completing a 5K (3.1 miles). Set goals and build up endurance and self-esteem while preparing to participate (run, jog or walk) in a 5K. Min/Max: 5/50. No class 5/7.

Date	Day	Time	Fee	Code
4/23-5/28	W	3:30-4:30P	\$25	533044-01

CODING WITH MINECRAFT

Grade 2-5. Using the Minecraft Education edition, students will complete lesson plans and solve code using either Python or drag-and-drop coding. Geared for new students and focusing on beginner concepts. Projects and concepts will repeat from previous lessons. Min/Max: 6/10. No class 2/17.

Date	Day	Time	Fee	Code
1/27-3/10	M	3:40-4:40P	\$60	415071-01

ART: PETS & PUPPIES

Grade 1-3. Explore new media such as video game art, rice painting, new paper watercolor and a sculpture made with straws. Without leaving the country our imagination will plus up to Austria, Germany, Switzer, and France and India. We will visit a lollipop garden, we will play on a watercolor piano; we will celebrate the Festival of Lights and more. We will even interface with famous artists such as Fernand LÄger and Alberto Giacometti. Min/Max: 6/20.

Date	Day	Time	Fee	Code
1/22-2/26	W	3:40-4:40P	\$60	415011-01

EARLY MORNING VOLLEYBALL CLUB

Grade 4-6. Join the Early Morning Volleyball Club with Ms. McGee and learn the basics of volleyball. Each class will focus on teaching basic skills, tactics, rules, and positions of the game. It is a great opportunity to increase your fitness level and have fun with friends. Min/Max: 12/16. No class 2/14.

Date	Day	Time	Fee	Code
1/24-3/7	F	8:00-8:35A	\$35	415180-01

EARLY MORNING BASKETBALL CLUB

Learn the skills and game of basketball with Ms. McGee and friends. Min/Max: 8/15. No class 2/18.

Date	Day	Time	Fee	Code
1/21-3/1	Tu	8:00-8:30A	\$35	415185-01

Grade 3-4

1/22-2/26	W	8:00-8:30A	\$35	415185-02
-----------	---	------------	------	-----------

Grade 5-6

1/23-2/27	Th	8:00-8:30A	\$35	415185-03
-----------	----	------------	------	-----------

FIT KIDS CLUB

Grade 2-6. Learn and practice fitness skills with Ms. McGee and friends. Min/Max: 8/15. No class 4/16.

Date	Day	Time	Fee	Code
3/12-4/23	W	8:00-8:30A	\$35	415186-01



ADAPTIVE SPORTS CLUB

Grade 4-6. Explore the world of adaptive sports. Learn and experience an alternative way to play traditional sports you know and love. Min/Max: 8/15. No class 4/15.

Date	Day	Time	Fee	Code
3/11-4/22	Tu	8:00-8:30A	\$35	415187-01

GYMNASTICS APPARTUS CLUB

Add practice time on skills of the gymnastics apparatus with Ms. McGee and friends. Min/Max: 8/15.

Date	Day	Time	Fee	Code
4/29-6/3	Tu	8:00-8:30A	\$35	515181-01

Grade 3-4

4/30-6/4	W	8:00-8:30A	\$35	515181-02
----------	---	------------	------	-----------

Grade 5-6

5/1-6/5	Th	8:00-8:30A	\$35	515181-03
---------	----	------------	------	-----------



SPORTS AND GAMES

Grade K-2. Skyhawks provides a wide variety of fun, safe and positive programs that emphasize critical lessons in sports and life, such as teamwork, respect and sportsmanship. Programs will give each child a positive introduction into sports while fostering a lifelong love for an active, healthy lifestyle. Students will take part in a variety of skill-building games and activities to give each athlete a complete understanding and overview of many different popular sports and games. Sports and games include capture the flag, soccer, ultimate frisbee, basketball, kickball, baseball, 4 square, flag football, team handball and many more. Kids will play 2-4 different games/sports each week. Min/Max: 6/15.

Date	Day	Time	Fee	Code
1/23-2/27	Th	3:40-4:40P	\$60	415205-01

TOY LAB

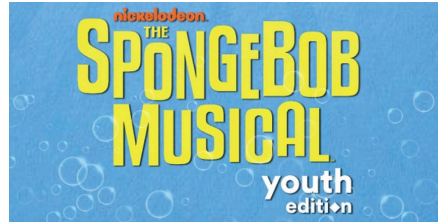
Grade 2-5. This series of programs puts students in the role of toy researchers and engineers at a company investigating the properties of different kinds of toys. They will unpack the science behind stretchy toys, electronic toys, toys that help you create art, and many more. They will work collaboratively to discover, understand, and appreciate that there is a lot of science and engineering behind the things that help us have fun. Min/Max: 10/25. No class 2/18.

Date	Day	Time	Fee	Code
1/21-3/4	Tu	3:40-4:40P	\$60	415246-01

PLAY & CREATE

Grade 3-6. Looking for a fun, hands-on break from screens after school? The club offers opportunities for kids to unleash their creativity through imaginative, screen-free activities. Each session is packed with engaging projects like arts and crafts, classic board games, outdoor games, and interactive group challenges. Kids will explore their creativity, problem-solving, and teamwork skills, all while having fun in a relaxed, tech-free environment. Whether they are painting, crafting, or playing, this club encourages kids to discover new interests and connect with friends face-to-face. Min/Max: 8/20. No class 3/31 & 4/14.

Date	Day	Time	Fee	Code
3/17-5/19	M	3:40-4:40P	\$40	515600-01



SPONGE BOB JR. MUSICAL CAST

Grade 5-6. Plunge into this stunning all-singing, all-dancing, dynamic stage show! When the citizens of Bikini Bottom discover that a volcano will soon erupt and destroy their humble home, SpongeBob and his friends must come together to save the fate of their undersea world. With lives hanging in the balance and all hope lost, a most unexpected hero rises up. The power of optimism really can save the world. Experience auditioning for a role, being coached through the rehearsal process and work as an ensemble to produce a play. All workshops, rehearsals, tech and performances are mandatory. The Musical should not conflict with festival chorus, band or orchestra.

Audition/Rehearsals: Tuesday, Wednesday and Thursday 3:40 - 5:00P, half-days 1:20 - 4:00P. 1/14, 1/15, 1/16, 1/21, 1/23, 1/28, 1/30, 2/4, 2/6, 2/11, 2/13, 2/20, 2/25, 2/27, 3/4, 3/6, 3/11, 3/13, 3/18, 3/20, 3/25, 3/27, 4/1, 4/3, 4/8, 4/10, 4/22, 4/24, 4/29, 5/1, 5/6, 5/7, 5/8. *Half days: 1/15, 3/18, 3/20, 5/7 meet 1:20 to 4:00P. Tech Week: Monday, 5/12 - Thursday, 5/15, 3:30 - 6:00P. Performances: 5/16 at 7:00P, 5/17 at 4:00P. Min/Max: 20/30.

Date	Day	Time	Fee	Code
1/14-5/15	Tu-Th	3:40-5:00P	\$150	415166-01

CHESS CLUB

Grade 1-6. Learn to play the game of chess. This class is for players who want to learn new strategies and ways to win as well as other chess "secrets." Beginners and those who have never played are also welcome. Learn all the basic moves of the chess pieces, their values, piece interaction, and how to win (checkmate). Min/Max: 10/14. No class 3/31 & 4/14.

Date	Day	Time	Fee	Code
3/17-5/5	M	3:40-4:40P	\$60	515035-01

GARDEN CLUB

Grade K-6. In this program children will learn an abundance of gardening topics such as planting, germination, transplanting, care, and harvesting as well as topics such as pollinators and good and bad bugs plus lots lots more. These fun activities will be done through hands on learning. Children will partner up, giving older students an opportunity to mentor younger kids while they garden together and share in its harvest. Min/Max: 10/20.

Date	Day	Time	Fee	Code
5/6-6/3	Tu	3:40-4:40P	\$50	515207-01

Webb

Elementary School

51 Willow Street



These programs are open to students at Webb.



Keane on Kids After School Enrichment Program's vision is to consistently provide a variety of After School Enrichment programs at all Wethersfield Elementary Schools in a safe and fun environment in which all children can participate in athletic, academic and social programs with the support and guidance of caring adults.

Programs will vary seasonally at each school. In addition, there will be a site coordinator at each school who will greet the children at the end of the school day, ensure that the after school program runs smoothly and monitor safe dismissal at the end of the program.



SDMS AFTER SCHOOL**HOMEWORK CLUB**

Grade 7-8. This service can be used 2:45-4:00P. Closed during school vacations, half days and snow days. Silas Deane Middle School Media Center. *Program does not follow a.s.A.p. schedule*.

Date	Day	Time	Fee
1/27-3/17	M	2:45-4:00P	FREE
1/29-3/19	W	2:45-4:00P	FREE
1/30-3/13	Th	2:45-4:00P	FREE
3/24-5/19	M	2:45-4:00P	FREE
3/26-5/28	W	2:45-4:00P	FREE
3/27-5/15	Th	2:45-4:00P	FREE

BASIC BAKING

Grade 7-8. Learn the basics of baking. Select recipes, prepare baked goods, taste finished products and compete in baking competitions. Make cupcakes, iced sugar cookies, muffins, cinnamon rolls and more. Min/Max: 10/16. No class 2/17, 3/5, 4/2, 4/16, 4/17, and 5/7.

Date	Day	Time	Fee	Code
1/22-3/12	W	2:45-4:30P	\$55	434020-02
1/27-3/17	M	2:45-4:30P	\$55	434020-01
3/24-5/19	M	2:45-4:30P	\$55	534020-01
3/26-5/28	W	2:45-4:30P	\$55	534020-02

**YOUTH SERVICES****SAFESITTER BABYSITTER TRAINING**

Grade 6-8. Learn life-saving skills so you can be safe if you are home alone or watching younger children. Play fun games, practice role-playing exercises and use mannequins to practice choking rescues. Your parents will feel better knowing you are prepared to handle whatever situation comes up and you are ready to be in charge. Min/Max: 2/8. EBW Nature Center.

Date	Day	Time	Fee	Code
2/22	Sa	8:30A-2:30P	\$100	434305-01
4/26	Sa	8:30A-2:30P	\$100	534305-01

FRIDAY NIGHT HANGOUTS

Grade 6-8. A great opportunity for 6-8th graders to hang out with friends and meet new ones. Play basketball, dodgeball, kickball, games and more. Min/Max: 10/32. Pitkin Community Center.

Date	Day	Time	Fee	Code
Grade 6				
1/24-3/14	F	7:00-9:00P	\$25	434505-01
<i>Program meets on 1/24, 2/7, 2/28, 3/14.</i>				
4/11-5/30	F	7:00-9:00P	\$25	534505-01
<i>Program meets 4/11, 5/2, 5/16 and 5/30.</i>				

Grade 7-8

1/31-3/21	F	7:00-9:00P	\$25	434506-01
<i>Program meets 1/31, 2/21, 3/7 and 3/21.</i>				
4/4-5/23	F	7:00-9:00P	\$25	534506-02
<i>Program meets on 4/4, 4/25, 5/9 and 5/23.</i>				

SDMS a.s.A.p.

After School Achievement Programs (a.s.A.p.), Sponsored by Wethersfield Social and Youth Services, in collaboration with Silas Deane Middle School, Wethersfield Parks and Recreation Department and We H.O.P.E./Wethersfield Youth Advisory Board, is designed to offer after school enrichment activities to all interested 7th and 8th grade students at Silas Deane Middle School. The goal of a.s.A.p. is to provide students with after school leisure time activity exploration and development within the framework of a primary prevention model.

There will be no after-school activity program on half days, snow days or holidays unless otherwise specified.

If registration places a financial burden on your family, please contact Wethersfield Social and Youth Services or a SDMS administrator or guidance counselor. Students will not be turned away for lack of program fees.

If you have any questions, please contact Patrick Telman at 860-721-2781.

SOCIAL AND YOUTH SERVICES PROGRAMS**WEEKEND YOUTH MEAL PROGRAM**

Students that receive free or reduced school lunch are eligible for the Weekend Meals Program. A guardian, or appointed designee, can pick up a bag of food for the weekend at Social & Youth Services that contains breakfast, lunch, and dinner for children living in the household. If your child(ren) is not getting free or reduced lunch, but you are experiencing financial difficulties, you may also sign up to participate in the program.

ENERGY ASSISTANCE PROGRAM

Applications are being accepted for the Community Renewal Team (CRT) Energy Assistance Program. This program provides financial assistance for heating expenses during the 2024/2025 heating season. Wethersfield residents only can make appointments with Social and Youth Services. To be eligible, a household's gross income must fall within established guidelines based on family size and annual income.

RENTER'S REBATE PROGRAM

Renter's Rebate Program will commence April 1st and end September 30th. State law provides a reimbursement program for Connecticut renters who are elderly or totally disabled, and whose incomes do not exceed certain limits. Persons renting an apartment or room, or living in cooperative housing or a mobile home, may be eligible for his program. Contact Social and Youth Services for more Information at 860-721-2880.

DIAL-A-RIDE PROGRAM

Provided through a contract with Ambassador Transportation, this program is available to those 60 and older and those with disabilities under 60 who need transportation within the greater Wethersfield area. Priority is given for medical appointments. Any senior is eligible regardless of financial status, and there is a yearly registration cost of \$78. Dial-A-Ride ID cards are sent to all registered riders.

For more information regarding Social and Youth Services programs, either contact the department at (860) 721-2880 or visit wethersfieldct.gov/social



MINECRAFT MONDAYS

Grade 7-8. This is an educational version of Minecraft called MinecraftEDU. Play on a private, contained game world in the media center. MinecraftEDU allows teachers to push out challenges and "assignments" in the game world for students to collaborate on together. Min/Max: 6/15. No class 2/17, 4/14 and 5/26.

Date	Day	Time	Fee	Code
1/27-3/17	M	2:45-4:00P	\$5	434150-01
3/24-5/19	M	2:45-4:00P	\$5	534150-01

SDMS CLUB BASKETBALL

Grade 7-8. Basketball Club is an opportunity to play basketball with your friends, improve skills through practice drills and participate in organized pickup games. Min/Max: 4/12. No class 2/17, 4/14 and 5/26.

Date	Day	Time	Fee	Code
1/27-3/17	M	2:45-4:00P	\$40	434461-01
4/7-6/2	M	2:45-4:00P	\$40	534461-01



SDMS CLUB SOCCER

Grade 7-8. Upgrade your soccer skills and learn some new ones in this new afterschool Soccer Club. Participants will have the opportunity to learn the rules and skills of soccer and participate in organized pickup games. Min/Max: 4/12. No class 4/16 & 5/7.

Date	Day	Time	Fee	Code
4/9-6/4	W	2:45-4:00P	\$40	534464-01



SDMS CLUB VOLLEYBALL

Grade 7-8. Volleyball Club is an opportunity to play volleyball with your friends, work on volleyball skills in a variety of exercises and drills and participate in pickup games. Min/Max: 4/12. No class 3/5.

Date	Day	Time	Fee	Code
1/29-3/19	W	2:45-4:00P	\$40	434462-01



SDMS CLUB KICKBALL

Grade 7-8. Kickball Club is an opportunity to have fun in safe controlled environment all while making friends and playing in several pick up games. Min/Max: 4/12.

Date	Day	Time	Fee	Code
1/30-3/13	Th	2:45-4:00P	\$40	434463-01

SDMS CLUB FLAG FOOTBALL

Grade 7-8. Flag Football Club is an opportunity to learn the skills and rules in a safe controlled environment all while making friends and playing in several pick up games Min/Max: 4/12. No class 4/17.

Date	Day	Time	Fee	Code
4/10-5/29	Th	2:45-4:00P	\$40	534465-01



INTERACTIVE ENGINEERING

Grade 7-8. The interactive engineering programs spark curiosity and ignite imagination. Students will design and build rockets, solar power vehicles, and mind-blowing concoctions, all while learning the engineering design process. Min/Max: 10/15. No class 4/2, 4/16, 5/7.

Date	Day	Time	Fee	Code
3/26-5/28	W	2:45-4:30P	\$35	534205-01



LATE BUS

The late bus picks students up at 4pm on Monday, Wednesday and Thursday.

Only students participating in an SDMS after school activity and are regular bus students (are already assigned a bus route and stop) can take the last bus and must sign up by 9A each day. THERE ARE NO LATE SIGNUPS! 9A is a firm cutoff time. Only students who have signed up for the late bus can take the late bus. The link is open from 7A to 9A.

Please visit https://docs.google.com/forms/d/e/1FAIpQLSc_iS0a76fVd0xrSfgkmLXDICM9ilzg4JWKQCQ38zqCOTQ70Ow/closedform to sign up on the morning your child will take the late bus. Please only sign your child up if they are going to take the late bus that afternoon.

GYMNASTICS

***Gymnastics
Registration will
close the
Wednesday before
each session.**



**Aerial Gymnastics is located at
136 Day Street, Newington**

GYMNASTICS PARENT & CHILD

Age 1 1/2 - 2. An instructor-led class for early development in gymnastics movement. Min/Max: 4/16. No class 2/15, 4/19.

Date	Day	Time	Res/NonRes	Code
2/1-3/1	Sa	9:00-9:45A	\$75/\$85	408220-02
3/8-3/29	Sa	9:00-9:45A	\$75/\$85	408220-03
4/5-4/26	Sa	9:00-9:45A	\$63/\$73	508220-01
5/3-5/17	Sa	9:00-9:45A	\$63/\$73	508220-02
5/31-6/14	Sa	9:00-9:45A	\$63/\$73	508220-03

GYMNASTICS 3 YEARS OLD

Age 3. This is an instructor-led class for the independent 3 year old that expands on early development movement to basic strength and skill development. Min/Max: 4/16. No class 2/15 and 4/19.

Date	Day	Time	Res/NonRes	Code
2/1-3/1	Sa	10:00-10:45A	\$75/\$85	408221-02
3/8-3/29	Sa	10:00-10:45A	\$75/\$85	408221-03
4/5-4/26	Sa	10:00-10:45A	\$63/\$73	508221-01
5/3-5/17	Sa	10:00-10:45A	\$63/\$73	508221-02
5/31-6/14	Sa	10:00-10:45A	\$63/\$73	508221-03

GYMNASTICS 4 & 5 YEARS OLD

Age 4-5. This is an instructor-led class for the sporty 4 and 5 year old (not in kindergarten), that further builds on strength and flexibility to enhance basic skill development. Min/Max: 4/16. No class 2/15 and 4/19.

Date	Day	Time	Res/NonRes	Code
2/1-3/1	Sa	11:00-11:45A	\$75/\$85	408222-02
3/8-3/29	Sa	11:00-11:45A	\$75/\$85	408222-03
4/5-4/26	Sa	11:00-11:45A	\$63/\$73	508222-01
5/3-5/17	Sa	11:00-11:45A	\$63/\$73	508222-02
5/31-6/14	Sa	11:00-11:45A	\$63/\$73	508222-03

GYMNASTICS GRADE K-2

Grade K-2. For the gymnastics loving early elementary students who desire to hone skills, build strength and gain flexibility. This class is excellent for all future athletes as it focuses on core strength throughout all of the fun apparatus set-ups. Min/Max: 4/16. No class 2/15 and 4/19.

Date	Day	Time	Res/NonRes	Code
2/1-3/1	Sa	12:00-12:45P	\$75/\$85	408223-02
3/8-3/29	Sa	12:00-12:45P	\$75/\$85	408223-03
4/5-4/26	Sa	12:00-12:45P	\$63/\$73	508223-01
5/3-5/17	Sa	12:00-12:45P	\$63/\$73	508223-02
5/31-6/14	Sa	12:00-12:45P	\$63/\$73	508223-03

GYMNASTICS INTERMEDIATE

Age 6-16. For gymnasts who want to take their gymnastics skills to the next level. This class is designed to meet each gymnast at their current skill level and use drills and technique correction to improve abilities. Min/Max: 4/16. No class 2/15 and 4/19.

Date	Day	Time	Res/NonRes	Code
2/1-3/1	Sa	12:00-1:00P	\$85/\$95	408225-02
3/8-3/29	Sa	12:00-1:00P	\$85/\$95	408225-03
4/5-4/26	Sa	12:00-1:00P	\$70/\$80	508225-01
5/3-5/17	Sa	12:00-1:00P	\$70/\$80	508225-02
5/31-6/14	Sa	12:00-1:00P	\$70/\$80	508225-03

KARATE

Learn the ancient art of Okinawa ti through the style of karate known as Okinawan Shorin-Ryu instructed by Sensei Lou Roberts. This form of karate will advance you from White Belt to Black Belt over the course of time and hard work. Participants will learn kata (a series of techniques combined in sequence), kumite (one step sparring), control, confidence, self-defense and above all respect for others as well as yourself. Min/Max: 10/16. Silas Deane Middle School. No class 1/20, 2/17, 4/14, 4/16, 5/26.

Date	Day	Time	Res/NonRes	Code
Age 7-17				
1/13-3/19	M,W	6:30-8:00P	\$155/\$175	408240-01
3/24-5/28	M,W	6:30-8:00P	\$155/\$175	508240-01
Age 18+				
1/13-3/19	M,W	6:30-8:00P	\$155/\$175	408240-03
3/24-5/28	M,W	6:30-8:00P	\$155/\$175	508240-03



REC SOCCER

Grade 3-8. This program will focus on developing a basic knowledge of the game of soccer and enhancing soccer skills through drill work and games. Session will meet twice a week. All participants should have shin guards, cleats, and a soccer ball. Program meets 5:30-7:00P on Wednesdays and 10:00A-12:00P on Saturdays. Min/Max: 10/30. Wethersfield High School.

Date	Day	Time	Fee	Code
4/23-5/31	W,Sa	5:30-7:30P	\$40	508310-01

YOUTH VOLLEYBALL

Grade 5-8. Athletes will learn the skills needed to be a successful volleyball player. Beginner level will be an overview of each skill and time to refine their skills. There will be game-like play at the end of each session. Intermediate level is for more experienced athletes who can successfully pass the ball to a target, are capable of serving the ball over the net, and have a general understanding of the game. Intermediate will involve more 6 on 6 game-type play. Min/Max: 10/24. No class 3/27. Wethersfield High School.

Date	Day	Time	Res/NonRes	Code
Beginner				
2/27-4/10	Th	6:30-7:30P	\$55/\$60	408360-01
4/24-5/29	Th	6:30-7:30P	\$55/\$60	508360-01
Advanced				
2/27-4/10	Th	7:30-8:30P	\$55/\$60	408360-02
4/24-5/29	Th	7:30-8:30P	\$55/\$60	508360-02

WETHERSFIELD INDEPENDENT YOUTH SPORTS LEAGUES



FOOTBALL

Flag Football for grades K-8.
Tackle Football for grades 2-8.
To register or for more information, visit:
wethersfieldyouthfootball.org



CHEER

Cheerleading for grades 3-8.
To register or for more information, visit:
wethersfieldyouthfootball.org



GDR SOCCER CLUB

Rec soccer for ages 3-8.
Travel soccer for ages 8 - 15.
Spring Registration: 12/1/24 - 3/1/25
To register or for more information, visit:
wethersfieldsoccer.com



LITTLE LEAGUE

Baseball and softball for ages 6 - 15.
Tee ball for boys and girls ages 4-5.
Spring Registration: 12/1/24 - 2/15/25
To register or for more information, visit:
wethersfieldlittleleague.org



BASKETBALL

Rec league for grades 3-8.
Travel for grades 4-8.
Instructional program for grades K-2.
To register or for more information, visit:
wethersfieldbasketballassociation.leagueapps.com/



FIELD HOCKEY

League for girls grades 5-8.
Clinics for grades 1-4.
To register or for more information, visit:
wethersfieldfieldhockey.com



LACROSSE

Lacrosse for boys and girls grades K-8.
Spring Registration: 12/1/24 - 1/27/25
To register or for more information, visit:
wethersfieldyouthlacrosse.com



WRESTLING

Co-ed wrestling for grades 5-8.
To register or for more information, visit:
"Wethersfield Wrestling Club"
Facebook Page

SKI CLUB

Registration is open now! Deadline is 1/2/25

Ski or snowboard at Mount Southington at a discounted group rate. Parents are responsible for transportation. Parents can drop-off/pick-up their kids or purchase a pass through the club and join the fun. Chaperones will be on-site to help participants. Registration is for all 4 dates. There is a \$15 club fee plus ski package of your choice: \$172-Lift only, \$240-Lift w/Lesson, \$252-Lift w/Rental, \$320-Lift w/Rental&Lesson. Min/Max: 15/50. Mount Southington.

Date	Day	Time	Res	Code
Grades 4-8				
1/14-2/4	Tu	4:00-9:00P	\$187-\$335	307000-01
Parents				
1/14-2/4	Tu	4:00-9:00P	\$187-\$335	307000-02



SPORTS FOR ADULTS

EARLY MORNING BASKETBALL

Age 18+. Early morning, organized pickup games for registered adults before work or school. Min/Max: 8/15. No class 4/16.
Pitkin Community Center.

Date	Day	Time	Res/NonRes	Code
1/29-3/19	W	6:00-7:00A	\$28/\$35	408030-01
4/2-5/28	W	6:00-7:00A	\$28/\$35	508030-02

SUNDAY BASKETBALL LEAGUE

Age 25+. Take your basketball game up a notch. Team play scheduled weekly. To ensure fair play, teams will be made with a live draft the week before the program begins. Captains will be chosen based on seniority. After 1/11, registration fees will increase to \$110 for residents and \$120 for non-residents. Registration closes 1/17. League draft 1/12. Min/Max: 24/64. No class 2/16 & 3/30. Wethersfield High School.

Date	Day	Time	Res/NonRes	Code
1/26-4/6	Su	8:30A-12:30P	\$100/\$110	408035-01



PICKLEBALL CLUB

Age 21+. The game is easy to pick up, fun to play, very social, and a great way to get exercise. Join and play Thursday evenings on a first come basis. Continuous rotation after each match.
Min/Max: 8/14. Pitkin Community Center. No class 4/3.

Date	Day	Time	Res/NonRes	Code
2/27-4/24	Th	7:15-9:15P	\$60/\$70	408344-01

9/11 CENTER OPEN GYM

Grade K-8. This program offers supervised open gym time for pick-up basketball and other activities.

Schedule:

- 10:30A-12:00P: Grades K-3 (parents welcome)
- 12:30-2:00P: Grades 4-6
- 2:00-3:30P: Middle School students

Registration is required. Min/Max: 20/40. No class 2/15.
Pitkin Community Center.

Date	Day	Time	Res/NonRes	Code
1/25-4/12	Sa	10:30A-3:30P	\$60/\$70	405140-01



FITNESS

YOGA WITH RIKKI

Age 18+. This class is open to all levels and will include yoga postures, gentle movement sequences, breath work, supported meditation, and guided relaxation for increased awareness and mindfulness of the breath and body. Min/Max: 8/35. Remote. No class 2/14, 4/18.

Date	Day	Time	Res/NonRes	Code
1/17-3/14	F	9:15-10:00A	\$50/\$60	405093-19
3/21-5/16	F	9:15-10:00A	\$50/\$60	505093-19



YOGA FOR THE NEW OR HESITANT YOGI

Age 16+. No need to feel intimidated. This beginner-friendly class makes yoga accessible to all, regardless of age or flexibility. Postures are simple and nourishing with props available for ease. Modifications are suggested to accommodate individual needs. Bring your own yoga mat and a playful spirit. Frank is a Yoga Alliance Certified Teacher. Min/Max: 10/15. Pitkin Community Center. No class 2/17, 3/17, 4/14.

Date	Day	Time	Res/NonRes	Code
1/27-3/31	M	5:00-6:00P	\$70/\$80	405095-01
4/7-6/2	M	5:00-6:00P	\$70/\$80	505095-01



GENTLE YOGA WITH KANDI

Age 16+. Class is designed for all levels of students but especially beginners, who are seeking a slower paced class and want a relaxing experience that includes gentle yoga postures, meditation and breathwork. Gentle yoga promotes increased flexibility, muscle and joint wellness and tension relief through holistic movement and breathing techniques that focus on whole body wellness. Students will be guided through a flow of gentle stretches and yoga poses for a meditative experience that has a calming effect on the mind and nervous system. Attention will also be placed on good alignment for safe movement and some balance postures to promote joint and muscle strength and conditioning. Wear comfortable clothing, bring a yoga mat, water bottle, and a yoga blanket or big towel for seated and restorative poses. All other props are provided. Min/Max: 10/15. Pitkin Community Center. No class 4/16.

Date	Day	Time	Res/NonRes	Code
1/29-3/19	W	5:00-6:00P	\$55/\$65	405096-01
4/2-5/28	W	5:00-6:00P	\$55/\$65	505096-01

FITNESS ROOM PASS

Age 16+. Fitness equipment includes treadmills, stationary bikes, ellipticals, dumbbells, medicine balls and floor mats. Disinfectant supplies will be available to wipe down your equipment. Open.

- M,W 8:00-11:00A and 11:00A-9:30P
- Tu,Th 8:00-11:00A, 12:30-2:00P and 6:00-9:00P
- F 8:00-10:00A and 11:00A-5:00P

Min/Max: 1/50. Pitkin Community Center. No class 2/17, 2/18, 4/3, 4/14, 4/15, 4/16, 4/17, 4/18, 5/26.

Date	Day	Time	Res/NonRes	Code
1/21-3/21	M-F	see above	\$20/\$25	405030-01
3/24-5/30	M-F	see above	\$20/\$25	505030-01



GOLD WITH SHERYL

Age 40+. An innovative, fun and exciting program designed for the active older adult, the true beginner, people who are not used to exercising, or who may be limited physically. Dance to fantastic music and easy to follow steps. Min/Max: 12/35. No class 2/18, 4/15 & 4/17. Pitkin Community Center.

Date	Day	Time	Res/NonRes	Code
1/21-3/18	Tu,Th	8:30-9:15A	\$67/\$77	405007-01
4/1-5/29	Tu,Th	8:30-9:15A	\$67/\$77	505007-01



ZUMBA WITH NANCY

Age 16+. Aerobic workout with a Latin-dance twist. Zumba fuses hypnotic Latin and international rhythms with easy to follow moves to create a dynamic fitness program. Min/Max: 10/30. No class 2/17, 2/18, 4/14, 4/15, 4/16, 4/17, 5/26. Pitkin Community Center.

Date	Day	Time	Res/NonRes	Code
1/21-3/18	Tu,Th	9:30-10:15A	\$67/\$77	405006-01
4/1-5/29	Tu,Th	9:30-10:15A	\$67/\$77	505006-01
1/22-3/19	M,W	6:00-6:45P	\$67/\$77	405006-02
3/26-5/28	M,W	6:00-6:45P	\$67/\$77	505006-02

GET YOUR BACK BACK!

Age 21+. It is your lucky day. Learn and focus on yoga postures to ease and eliminate pain, especially the lower back pain that so many people experience as an aspect of working at a computer or aging. Min/Max: 8/15. Pitkin Community Center.

Date	Day	Time	Res/NonRes	Code
3/17	M	5:30-7:00P	\$28/\$34	405150-01

**VIRTUAL ONLY FITNESS CLASSES****CORE STRENGTH**

Age 16+. This fun and functional class provides a complete workout that will help tone and reshape your body. Use light weights, bands and your own body weight to improve strength, flexibility, balance and stamina to sculpt and tone. Yoga mat, water and light weights recommended. All levels with some modifications. Min/Max: 1/25. Remote.

Date	Day	Time	Fee	Code
1/23-4/3	Th	6:00-6:45P	\$96	405055-19
4/24-6/19	Th	6:00-6:45P	\$80	505055-19

**CARDIO STRENGTH**

Age 16+. This fun class provides a complete workout that will help tone and reshape your body. Target the arms, legs, abs and glutes. In addition to using weights to help build strength, this class incorporates light cardio to improve cardiovascular health. The strength and cardio combo is a great way to improve overall fitness and build bone density. Yoga mat, water and weights recommended. (1-3 lb and 5-8 lb or larger if desired). Min/Max: 1/30. Remote.

Date	Day	Time	Fee	Code
1/22-4/2	W	8:30-9:15A	\$96	405027-19
4/23-6/18	W	8:30-9:15A	\$80	505027-19

PILATES

Age 16+. Exercises focus on the core muscles which include the abs, back, glutes and shoulders. Work to create balance and strength in your trunk and loosen limbs. Pilates strives to make you strong and long while improving balance, coordination and posture. Every part of the body gets a workout; discover muscles you never knew you had. Yoga mat and water recommended. Min/Max: 8/16. Remote.

Date	Day	Time	Fee	Code
1/21-4/1	Tu	6:00-6:45P	\$96	405050-19
4/22-6/17	Tu	6:00-6:45P	\$80	505050-19

**15 MINUTE HIIT**

Age 16+. Start your day feeling energized. This high intensity interval training workout is for you if you are short on time. Research shows short bouts of intense exercise can be as effective as longer more moderate workouts. This class makes it easy to fit exercise in your schedule. Class will include a short warm up and cool down, and in-between work intensely with fun and full body moves. Modifications will be given so that you can work at the right pace for you. Min/Max: 1/30. Remote.

Date	Day	Time	Fee	Code
1/22-4/2	W	8:10-8:25A	\$52	405047-19
4/23-6/18	W	8:10-8:25A	\$52	505047-19

ACTIVITIES & CLUBS



\$2 fee includes admission and two bingo cards; \$.50 each additional card. Check monthly newsletter and website for updates on Bingo events, lunches and celebrations. Held in the Banquet room weekly. No bingo 12/25, 1/1 and 3/27.

Day	Time	Fee
W	12:15P	\$2 SC Member \$4 Non-Member



SETBACK

Everyone is welcome including singles, partners, beginners and experienced players. **Please arrive no later than 12:00P.** Held weekly in the Banquet Room. No setback 2/7, 4/18.

Day	Time	Fee
F	12:15 - 3:00P	\$2 SC Member \$3 Non-Member

WII BOWLING

All the fun of bowling without the heavy ball, with benefits of light exercise that improves coordination and balance. Meet new friends and rekindle an old pastime in a new way. Join our group for a little competition and a lot of fun. Beginners welcome.

Day	Time	Fee
Tu	1:00 - 3:00P	FREE

CARDS & BOARD GAMES

Meet a friend for cards or board games. Call to schedule a new game or join an existing game.

AFTERNOON MOVIES

Join us for a variety of newly released and classic movies, Wednesdays for Action/Thriller/Westerns. Movies may be delayed or cancelled when special events are scheduled.

Day	Time	Fee
M, W,Th	1:00P	FREE

MAH JONGG

Enjoy this fascinating rummy-like game. New players are always welcome. Instruction available for beginners.

Day	Time	Fee
Tu,Th	9:30A-1:00P	FREE



RED ONION SENIOR QUILTERS

Share your love of quilting and sharpen your skills. All skill levels welcome. The group shares quilting techniques, works on a "block of the month" and quilts for charity.

Day	Time	Fee
3rd M/month	10:00A-1:00P	FREE

KNITTING CLUB

All skill levels welcome. Meet new friends and help us knit for local charities.

Day	Time	Fee
2 & 4 T/month	10:00-11:30A	FREE

BUS TRIPS

Day and overnight trips are scheduled through the year. More information can be found in the monthly newsletter and on our website.



AARP SMART DRIVING COURSE

Refresh your driving skills and qualify for at least a 5% reduction in your car insurance premiums. **REGISTRATION REQUIRED.**

Date	Time	Fee
2/29	9:00A-1:00P	\$20 AARP Mbr
5/23	12:00-4:00P	\$25 Non-AARP

LEGAL RESOURCE

Reed Wilson Case, LLC, offers free 30 minute consultations on legal matters to Senior Center members regarding elder law, Medicaid/Title 19, estate planning, probate and trusts. The attorney determines your legal needs and provides an estimate of costs for their services or a referral for advice from attorneys with other specialties. **APPOINTMENT REQUIRED.**

Date	Time	Fee
3rd Tu/month	10:00A - 12:00P	FREE



SENIOR CENTER

Pitkin Community Center
30 Greenfield Street
Phone: 860-721-2770
Email:
senior.center@wethersfieldct.gov

Senior Center Coordinator:
Amy Miller Dignoti

Program Assistants:
Annette Bowman
Jennifer Stevens

Please call or email the Senior Center to register for events and programs or to schedule appointments. Senior Center news and updates can be found in our monthly newsletter, on our website, and in the Rare Reminder at the end of each month.

ANNUAL MEMBERSHIPS

A Senior Center membership is required to participate in all ongoing classes and programs and qualifies participants for discounted admission to monthly programs. The Center depends on membership dues and class fees for its continued operation. Renewals and new memberships can be completed online, in person at the Senior Center or by mailing a completed membership form.

\$5 FOR WETHERSFIELD RESIDENTS

\$7 FOR NON-RESIDENTS

Age 90+ FREE

WETHERSFIELD ELDERLY SERVICES:

Daniel Rosario, social worker and Elderly Services Coordinator can assist with federal, state and local assistance programs and housing resources.

The department is available to provide assistance and services if you are experiencing financial difficulties or need access to food, basic needs, or transportation. Call for information on Energy Assistance, SNAP vouchers, Dial-a-Ride and CHOICES.



SENIOR CITIZEN ADVISORY COMMITTEE

The Wethersfield Senior Citizen Advisory Committee (SCAC) meets monthly, on the third Thursday at 3:00P at the Senior Center. Representatives from the Town of Wethersfield and Town Council meet to discuss topics of interest to Wethersfield residents over the age of 55. For more information, or to join us at our next meeting, please contact the Senior Center.

Day	Time
3rd Th/month	3:00P



SPECIAL EVENTS

ENTERTAINMENT EVENTS

Live, fabulous musical entertainment held monthly. Door prizes included in admission. Mondays - lunch at 12P/entertainment at 1P. Details will be listed in our monthly newsletters and on our website.

1/27: Winter Beach Party with the Boomers
2/24: Celebrate Mardi Gras with Jose Paulo
3/24: Rock of Ages with John Skinnon
4/14: The American Songbook with Blaise
5/19: Music and Melodies with Tres Johnson

WINTER CRAFT WITH THE WHS INTERACT CLUB

Join us for a fun and easy craft with students from WHS. We will have a snack and take home a beautiful seasonal piece while enjoying an afternoon socializing with the students.

Date	Day	Time	Fee
2/6	Th	3:00P	FREE

LUNCH & LEARNS

Coffee Talk with Mayor Ken Lesser.

Date	Day	Time	Fee
1/8	W	10:00A	FREE

Your Legacy Matters:
Writing Your story for Future Generations

Date	Day	Time	Fee
1/14	Tu	12:30P	FREE

AUTHOR BRUNCH

Join us for brunch at the Wethersfield Senior Center as we host author Janis Robinson Daly for her 2025 multi-media presentation of the latest novels in Women's History. Janis will take you on a guided tour of 31 historical fiction titles and their authors who highlight largely unknown women in history. Come for brunch, the presentation, and book bingo, and spend some time with this acclaimed author. Signed copies of Janis's books "The Unlocked Path" and "The Path Beneath Her Feet" (about the first Women's medical college in the United States) will be available for purchase. The program is FREE, but registration is required. Suggested donation to the Senior Center is \$5.00. *This program is sponsored by the Russo Family, in memory of Joseph C. Russo, ADA attorney for the Dept. of Justice and the City of Chicago.

Date	Day	Time	Fee
3/19	W	10:00A	FREE

VETERANS COFFEE HOUSE

4th Tuesday each month at 9:30A beginning in January. Veterans are welcomed to the Senior Center for pastries/donuts, coffee and conversation.

HEALTH AND WELLNESS SERVICES

CRT LUNCH PROGRAM/SENIOR CAFE

At the Pitkin Community Center. Suggested donation: \$3 for ages 60+ and companion; under age 60 fee is \$10. **Reservation required.** Call 860-721-2773 to learn about meal choices and reservation details to dine with us.

FOOT CARE

Includes cleaning, filing, trimming, reducing corns and calluses by licensed RN. Seniors only. No diabetics. **Appointment required.**

Day	Time	Fee
1st/3rd W/month	8:30A – 3:00P	\$30

AUDITORY CONSULTATIONS

Free hearing screening, wax checks and free hearing aid battery replacement. **Appointment required.** First Thursday, every other month.

Date	Time	Fee
1st Th	10:00A-12:00P	FREE

MONTHLY MASSAGE

Licensed massage therapists offer chair and full table massages at discounted rates for Senior Center members. Call for pricing and schedule. **Appointment required.**

Day:
2nd & 4th Wednesdays/month & 4th Fridays available with Connie

1st & 3rd Friday/month
60 min. Swedish massage available with Holly

Fee: 60 minute \$55
30 minute \$28
15 minute \$15



DISCOUNTED HAIRCUTS

Discounted haircuts are provided by students of the International Institute of Cosmetology under the supervision of professional stylists. Haircuts can only be scheduled through the Senior Center. Limited openings. All services are completed at the school, 632 Silas Deane Highway. You must be a Wethersfield senior resident for this discount. Call the Senior Center for schedule and to book an appointment.

Dates	Time	Fee
Varies	By appointment	\$4



SENIOR CENTER TECH HELP CLASSES

DROP IN TECH HELP FOR SENIORS – ANDROID

Tech Help for Seniors provides FREE drop in assistance to answer all your tech questions with a focus on Android smart phones and tablets (also available for iPhone, iPad, apps, laptops, etc.) First come, first served. Ongoing.

Day	Time	Fee
Th	10:00A-12:00P	FREE

DROP IN TECH HELP FOR SENIORS- APPLE PRODUCTS

Tech Help for Seniors provides FREE drop in assistance to answer all your questions with iPhones and iPads. First come, first served. Every Tuesday beginning January 21.

Day	Time	Fee
T	10:00A-12:00P	FREE



ANDROID 101: BASICS I

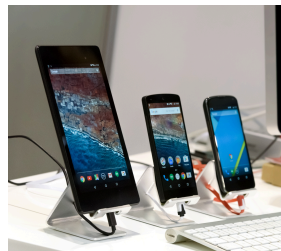
This beginner-friendly course is designed for those new to Android smartphones and covers the essentials needed to get started with confidence. Participants will learn how to navigate their Android phone's interface, utilize key apps, and understand core functions, including: Home Screen Navigation, Essential Gestures, Google Account Setup and Basic Apps.

Date	Day	Time	Fee
1/9	Th	1:00-2:00P	FREE

ANDROID 101: BASICS II

Building on the foundations from Android 101: Basics I, this follow-up Basics II course delves deeper into organizing, personalizing, and managing your Android phone. This session includes a review of key concepts from the first class, along with a Q&A to address any lingering questions. Participants will then explore additional topics, including: App Management, Contacts Management, Internet Connections, Storage & Backup and a review of other essential settings.

Date	Day	Time	Fee
2/6	Th	1:00-2:00P	FREE



INTERESTED IN HELPING OUT?

Volunteers are always welcome at the Senior Center. We have opportunities that range from assisting with special events and projects, mailings and notification to members, making phone calls, or regular weekly projects. Perhaps you have a special talent or knowledge base you would like to share. To further discuss volunteer opportunities at the Senior Center, please call 860-721-2770 or email the Senior Center Coordinator at senior.center@wethersfieldct.gov.



WETHERSFIELD TECH HELP FOR SENIORS

TECH HELP FOR SENIORS offers individual and small group instruction to help meet all your technology needs. Schedule one-to-one assistance with iPads, iPhones, Windows 10 computers, and Android tablets and smartphones by appointment only. Classes are offered in person and via Zoom throughout the year.

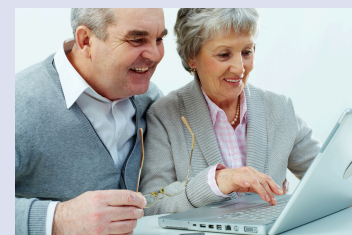
Wethersfield Tech Help for Seniors and The Wethersfield Senior Center will be hosting various Lunch & Learn discussions and classes throughout the winter and spring session. Learn about new technology, what you can do on your iPhone and iPad, and workshops for beginners to practice their new skills. Dates and details will be posted in the fall both online and in monthly newsletters.

Drop in help available. See above for days and times.

For more information, to register for classes, or inquire about one on one assistance, please call the Senior Center or email: techhelpforseniorswethersfield@gmail.com



Follow us on Facebook: Tech Help for Seniors Wethersfield



ARTIST'S JOURNEY

Age 55+. Join this free-flowing class, where our talented instructor and local artist is available to provide individual guidance for your burgeoning self-expression. Beginners and experienced painters welcome. Students are free to use any medium they prefer. Water-based paint (acrylics and water colors) brushes and canvas boards provided. Min/Max: 10/15. Pitkin Community Center. No class 11/28.

Date	Day	Time	Fee	Code
1/22-3/26	W	10:00-11:30A	\$83	436005-01
1/23-3/27	Th	10:00-11:30A	\$83	436005-02
4/2-6/4	W	10:00-11:30A	\$83	536005-01
4/3-6/5	Th	10:00-11:30A	\$83	536005-02



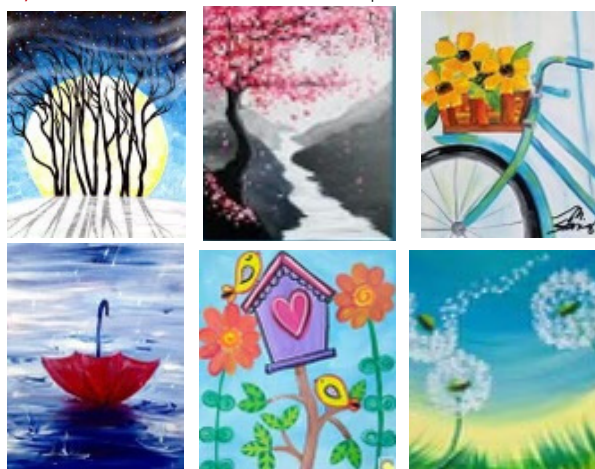
PAINT PARTY

Age 55+. Enjoy a guided paint class, similar to Paint Nights hosted at local restaurants or studios, at a fraction of the cost. Our talented instructor, Joann, will help you create beautiful seasonal paintings. You don't need to be an "artist" to have a fun experience and create an amazing painting in session. Fee includes instruction, materials and light dinner.

*Visit <https://wethersfieldct.gov/senior-center> to view the painting you will be creating for this class. Min/Max: 6/16.

Pitkin Community Center.

Date	Day	Time	Fee	Code
2/4	Tu	3:00-5:00P	\$20	436020-01
2/18	Tu	3:00-5:00P	\$20	436020-02
3/18	Tu	3:00-5:00P	\$20	436020-03
4/15	Tu	4:00-6:00P	\$20	536020-01
5/20	Tu	5:00-7:00P	\$20	536020-02
6/3	Tu	5:00-7:00P	\$20	536020-03



SENIOR PICKLEBALL CLINIC

Age 55+. Find out what all the excitement is about in the fastest growing sport in the USA: Pickleball. Pickleball is a paddleball sport that combines elements of badminton, table tennis, and tennis. Join Certified Pickleball Instructor, Ahmad Elliot, as he teaches you to dink, serve, return and score. All equipment provided. Contact Amy Miller Dignoti for additional information and to register.



SENIOR PICKLEBALL

Age 55+. Register for our indoor Pickleball play. **Monday is beginner and Wednesday is Intermediate.** Net will be provided. Bring your own racquet; some available upon request. Open to all skill levels. Learn by playing and observing. Min/Max: 6/12. Pitkin Community Center. No class 2/17, 4/16.

Date	Day	Time	Fee	Code
1/27-3/24	M	8:30-10:30A	\$24	408351-01
1/29-3/19	W	8:30-10:30A	\$24	408351-02
3/31-5/19	M	8:30-10:30A	\$24	508351-01
4/2-5/21	W	8:30-10:30A	\$24	508351-02



SENIOR CENTER

Pitkin Community Center
30 Greenfield Street
Phone: 860-721-2770

Email:
senior.center@wethersfieldct.gov

Senior Center Coordinator:
Amy Miller Dignoti

Program Assistants:
Annette Bowman
Jennifer Stevens

Please call or email the Senior Center to register for events and programs or to schedule appointments. Senior Center news and updates can be found in our monthly newsletter, on our website, and in the Rare Reminder at the end of each month.

The Wethersfield Senior Center serves adults 55 years and older, offering social, educational, entertainment, health and wellness programs. The Center is also a source of information and referral to programs and services that can help seniors and their families find the resources needed to maintain active, independent and fulfilling lives.

If you would like to receive regular emails and updates from the WSC, please email senior.center@wethersfieldct.gov to be added to our email distribution list. Receive a weekly update on programming, events and important information such as vaccines, tax assistance and status of programs at the Center.



WHAT IS SILVER SNEAKERS?

SilverSneakers is a health and fitness program designed for adults 65+ that's included with many Medicare Advantage plans.

The goal? To help you stay strong in body, mind, and spirit. Regular physical activity keeps your heart, brain, bones, muscles, and joints healthy.

WALKING DVD

MEMBER DIRECTED. Our group of walkers follows a DVD that incorporates simple aerobic exercises with a continuous walk in place. Upbeat music keeps you motivated and invigorated. Beginners welcome. No class 1/20, 2/17, 4/18, 5/26.

Day: M, W, F

Time: 10:00-11:00A

Fee: FREE for SC members



SILVER SNEAKERS STRENGTH AND BALANCE

Age 55+. This class focuses on exercises and movements that will make you stronger, improve balance and reduce fall risks. Classes are suitable for all fitness levels as exercises are adapted for each individual's skill level. A chair is used for balance and support. Min/Max: 5/30. Held in person via zoom.

Date	Day	Time	Fee	Code
Pitkin Community Center				
1/21-3/25	Tu	10:00-10:45A	\$40	436260-01
1/23-3/27	Th	10:00-10:45A	\$40	436260-02
4/1-6/3	Tu	10:00-10:45A	\$40	536260-01
4/3-6/5	Th	10:00-10:45A	\$40	536260-02

PCC - United Healthcare Active Renew

1/21-3/25	Tu	10:00-10:45A	FREE	436260-11
1/23-3/27	Th	10:00-10:45A	FREE	436260-12
4/1-6/3	Tu	10:00-10:45A	FREE	536260-11
4/3-6/5	Th	10:00-10:45A	FREE	536260-12

Remote

1/21-3/25	Tu	10:00-10:45A	\$40	436260-19
1/23-3/27	Th	10:00-10:45A	\$40	436260-20
4/1-6/3	Tu	10:00-10:45A	\$40	536260-19
4/3-6/5	Th	10:00-10:45A	\$40	536260-20

Remote - United Healthcare Active Renew

1/21-3/25	Tu	10:00-10:45A	FREE	436260-99
1/23-3/27	Th	10:00-10:45A	FREE	436260-98
4/1-6/3	Tu	10:00-10:45A	FREE	536260-99
4/3-6/5	Th	10:00-10:45A	FREE	536260-98



CHAIR YOGA

Age 55+. Learn yoga basics using a program that adapts easily to any fitness level. All movements can be done seated and will work your core and extremities. Benefits include increased flexibility, strength and relaxation. Min/Max: 15/30. No class 1/20 & 2/17.

Date	Day	Time	Fee	Code
Pitkin Community Center				
1/13-3/24	M	11:30A-12:20P	\$36	436235-01
1/23-3/27	Th	11:30A-12:20P	\$40	436235-02
3/31-6/2	M	11:30A-12:20P	\$36	536235-01
4/3-6/5	Th	11:30A-12:20P	\$40	536235-02

PCC - United Healthcare Active Renew

1/13-3/24	M	11:30A-12:20P	FREE	436235-11
1/23-3/27	Th	11:30A-12:20P	FREE	436235-12
3/31-6/2	M	11:30A-12:20P	FREE	536235-11
4/3-6/5	Th	11:30A-12:20P	FREE	536235-12

Remote

1/13-3/24	M	11:30A-12:20P	\$36	436235-19
1/23-3/27	Th	11:30A-12:20P	\$40	436235-20
3/31-6/2	M	11:30A-12:20P	\$36	536235-19
4/3-6/5	Th	11:30A-12:20P	\$40	536235-20

Remote - United Healthcare Active Renew

1/13-3/24	M	11:30A-12:20P	FREE	436235-99
1/23-3/27	Th	11:30A-12:20P	FREE	436235-98
3/31-6/2	M	11:30A-12:20P	FREE	536235-99
4/3-6/5	Th	11:30A-12:20P	FREE	536235-98

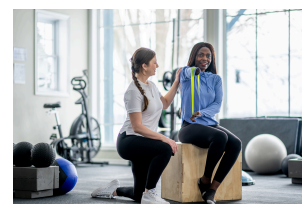
STRENGTH CONDITIONING AND BALANCE WITH ROBA PT

Age 55+. Roba Physical Therapy and Wellness will help you stay active and safe. Having good balance and stability is integral to our everyday life. This class will get you moving in a safe and active way while providing an exercise routine that can be done in the comfort of your own home to help with your balance and stability. Min/Max: 10/30. No class 4/18.

Date	Day	Time	Fee	Code
Pitkin Community Center				
1/24-3/28	F	10:45-11:35A	\$40	436255-01
4/4-6/6	F	10:45-11:35A	\$36	536255-01

PCC - United Healthcare Active Renew

1/24-3/28	F	10:45-11:35A	FREE	436255-11
4/4-6/6	F	10:45-11:35A	FREE	536255-11



BETTER HEALTH AND IMPROVING BALANCE WITH TAI CHI/QIGONG

Age 55+. QiGong and Tai chi have many benefits including improved flexibility, strength, balance and mental focus. This class introduces qigong movements and basic gentle tai chi movements for those that are newer to qigong and tai chi. It is a class that offers great support for improving mobility, balance and clarity of mind through breath. We will begin with simple stretching, which can be done seated. QiGong exercises and Tai Chi movement from the 24 Form Yang style, promote strength and confidence with balance and ease of movement. Movements can be modified if needed. There will be a short Mindful Breath Meditation at end of class as time permits. Min/Max: 10/30.

Date	Day	Time	Fee	Code
Pitkin Community Center				
1/22-3/26	W	10:00-10:50A	\$40	436252-01
4/2-6/4	W	10:00-10:50A	\$40	536252-01

PCC - United Healthcare Active Renew

1/22-3/26	W	10:00-10:50A	FREE	436252-11
4/2-6/4	W	10:00-10:50A	FREE	536252-11

Remote

1/22-3/26	W	10:00-10:50A	\$40	436252-19
4/2-6/4	W	10:00-10:50A	\$40	536252-19

Remote - United Healthcare Active Renew

1/22-3/26	W	10:00-10:50A	FREE	436252-99
4/2-6/4	W	10:00-10:50A	FREE	536252-99



Eleanor Buck Wolf Nature Center

156 Prospect St, Wethersfield, CT 06109 Phone: (860) 721-2780

Friends of the Nature Center Membership Registration Form**HOUSEHOLD CONTACT INFORMATION – ALL INFORMATION MUST BE COMPLETED**

Adult First Name _____ Last Name _____

Adult First Name _____ Last Name _____

Street Address _____ City _____ State _____ Zip _____

Home Phone _____ Cell Phone _____ Email Address _____

Annual Memberships	Registration Fee	Lifetime Memberships	Registration Fee
<input type="checkbox"/> Individual	\$15	<input type="checkbox"/> Individual	\$500
<input type="checkbox"/> Family	\$25	<input type="checkbox"/> Family	\$1000
<input type="checkbox"/> Group (Non-Profit, School , Scouts etc.)	\$40		
<input type="checkbox"/> Guardian of Nature	\$65 (Includes Pin and T Shirt)		



Is this a renewal or new membership	<input type="checkbox"/> Renewal	<input type="checkbox"/> New
-------------------------------------	----------------------------------	------------------------------

	Member Info – Name	Age	DOB		Member Info - Name	Age	DOB
Adult 1				Child 2			
Adult 2				Child 3			
Child 1				Child 4			

Payment Type: ☐ Check # _____ ☐ Cash _____ ☐ Credit Card**Membership Subtotal** \$ _____**Friends Donation** + _____Credit Card Signature _____ Date _____ **Total Amount** \$ _____**I agree to pay the total amount according to the cardholder agreement.**☐ Visa ☐ Mastercard ☐ Discover _____ - _____ - _____ - _____ Exp. Date ____/____**The Friends is an IRS 501-c3 non-profit corporation. Contributions are tax deductible to the extent permitted by law.****For more information please visit: www.wethersfieldct.gov/ebwnaturecenter**

Wethersfield Senior Center

30 Greenfield Street, Wethersfield, CT 06109 Phone: (860) 721-2770

Senior Center Program and Membership Registration Form**HOUSEHOLD CONTACT INFORMATION – ALL INFORMATION MUST BE COMPLETED**

Adult First Name _____ **Last Name** _____
Adult First Name _____ **Last Name** _____
Street Address _____ **City** _____ **State** _____ **Zip** _____
Home Phone _____ **Cell** _____
Email _____ **DOB** _____
Emergency Contact _____ **Relationship** _____ **Phone** _____

PROGRAM REGISTRATION

Participant	M/F	DOB	Program Name	Program Code	Fee

Silver Sneakers #: _____

UHC Active Renew #: _____

Special Information (allergies, medical conditions, medications, etc.) _____

<input type="checkbox"/> Renewal Membership	<input type="checkbox"/> New Membership
<input type="checkbox"/> \$5.00 – Resident <input type="checkbox"/> \$7.00 - Non-Resident	<input type="checkbox"/> \$FREE – Age 90+

WAIVER – READ CAREFULLY AND SIGN BELOW

I acknowledge there are certain risks in participating in a recreational activity and agree to assume the risk of injury which I and/or my child may encounter. I grant permission to seek emergency, medical care on behalf of myself and/or child. (Medical approval is suggested for those participating in any exercise class.) I further agree I will not hold employees of the Town of Wethersfield or its agents liable for any injuries which I and/or my child may encounter. I grant permission for transportation in authorized vehicles for Parks & Recreation activities and for photographs to be taken for department publicity unless otherwise noted in writing. In addition, I acknowledge all household information provided is true and accurate. The Parks & Recreation Department may request further verification regarding the information provided.

Adult Signature: _____ **Date:** _____

PAYMENT INFORMATION – MAKE CHECKS PAYABLE TO THE TOWN OF WETHERSFIELD

Payment Type: ☐ Check # _____ ☐ Cash _____ ☐ Credit Card **Program Fees Subtotal \$** _____

Credit Card Signature _____ Date _____ **Total Amount \$** _____

I agree to pay the total amount according to the cardholder agreement. Please refer to refund policy in brochure.

☐ Visa ☐ Mastercard ☐ Discover _____ - _____ - _____ - _____ Exp. Date ____/____

Keane on Kids After School Enrichment Program Supplemental Registration Form

Please be specific when providing the following information and submit with your registration form

Participant's Name _____

Participant's School Teacher's Name _____

Does the Participant Have Special Medical Needs? _____

Does Your child Have Any Allergies: _____

Does Your Child Have an EpiPen? Yes No

If Someone Other Than Parent/Guardian is Picking Up, Please Indicate Here:

Name _____

Phone Number (during after school hours) _____

Will Your Student be Walking Home? (Circle one) Yes No

Participant Signature (or Parent/Guardian)

Date

Therapeutic Recreation Program Supplemental Registration Form

Please be specific when providing the following information and submit with your registration form

Participant's Name _____

Primary Disability _____

Any Assistive or Adaptive Device(s) used _____

Any Medications _____

Side Effects Staff should be Aware of _____

Allergies _____

Special Considerations Not Mentioned Above (especially related to medical or behavioral needs)

Special Interests _____

Goals You Wish to See from this Program _____

I give my permission for transportation to be provided in an authorized town vehicle to TR activities. Yes ____ No ____

Participant Signature (or Parent/Guardian)

Date

Wethersfield Parks & Recreation Department

505 Silas Deane Highway, Wethersfield, CT 06109 Phone: (860) 721-2890 wethersfieldct.gov/recreation

Program Registration Form**HOUSEHOLD CONTACT INFORMATION – PLEASE FILL OUT COMPLETELY**

Adult First Name _____ Last Name _____
 Adult First Name _____ Last Name _____
 Street Address _____ City _____ State ____ Zip ____
 Home Phone _____ Cell Phone _____
 Work Phone _____ Email Address _____
 Emergency Contact _____ Relationship _____ Phone _____

PROGRAM REGISTRATION

Participant	M/F	DOB	Grade	Program Name	Program Code	Fee

Special Information (allergies, medical conditions, medications, etc.) _____

POOL PASS Individual Pass - \$40 Family Pass - \$65 (Limited to 2 adults and the children living in household)

Individual Pass - First & Last Name	Age	DOB

	Family Pass - Name	Age	DOB	Family Pass - Name	Age	DOB
Adult 1						
Adult 2						

WAIVER - READ CAREFULLY AND SIGN BELOW

I acknowledge there are certain risks in participating in a recreational activity and agree to assume the risk of injury which I and/or my child may encounter. I grant permission to seek emergency, medical care on behalf of myself and/or child. (Medical approval is suggested for those participating in any exercise class.) I further agree I will not hold employees of the Town of Wethersfield or its agents liable for any injuries which I and/or my child may encounter. I grant permission for transportation in authorized vehicles for Parks & Recreation activities and for photographs to be taken for department publicity unless otherwise noted in writing. In addition, I acknowledge all household information provided is true and accurate. The Parks & Recreation Department may request further verification regarding the information provided.

Adult Signature: _____ Date _____

PAYMENT INFORMATIONPayment Type: ☐ Check # _____ ☐ Cash _____ ☐ Credit Card

Program Fees Subtotal \$ _____

Donation for camp fund (Provides assistance for families unable to afford program fees for summer camp.)

Donation + _____
(optional)

Credit Card Signature _____ Date _____

Total Amount \$ _____

I agree to pay the total amount according to the cardholder agreement. Please refer to refund policy in brochure.

☐ Visa ☐ Mastercard ☐ Discover _____ - _____ - _____ - _____ Exp. Date ____ / ____